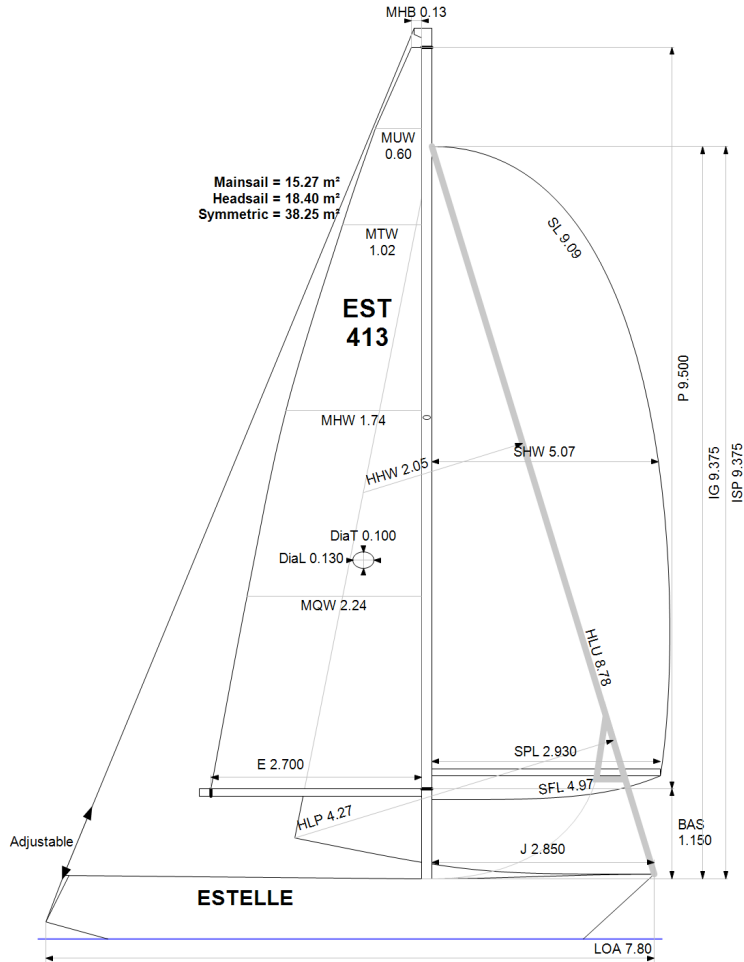


GPH = **770.0** CDL = **5.893**



BOAT

Class **ALBIN 78**
Designer **Peter Norlin**
Builder **Albin Marine**
Age Date **01/1978**
Series Date **01/1978**
Offset File **Albin78_sc.off**

HULL

Length Overall **7.800 m**
Maximum Beam **2.760 m**
Draft **1.455 m**
Displacement **2,300 kg**
DLR **9.3064**
IMS Division **Cruiser/Racer**
Dynamic Allowance **0.521%**
Age Allowance **0.487%**

PROPELLER

Installation **Strut**
Type **Folding 2 blades**
Diameter **0.360m**

CREW

Maximum weight **400 kg**
Minimum weight **300 kg * when applied**
Non Manual Power **No**
Crew Arm Extension

SAIL AREAS (m²)

| | Measured | Rated |
|-----------------|--------------|--------------|
| Mainsail | 15.27 | 15.47 |
| Headsail Luffed | 18.40 | 18.40 |
| Headsail Flying | | |
| Symmetric | 38.25 | 38.25 |
| Asymmetric | | |

SAIL LIMITATIONS

Headsails **1 * Woven polyester sails**
Spinnakers **4**

STABILITY

Righting Moment **32.0 kg·m**
Stability Index **N/A**

OWNER

The owner certifies that he/she understands his/her responsibilities under ORC Rule and Regulations.

| Rated boat velocities in knots | | | | | | | |
|--------------------------------|--------|--------|--------|--------|--------|--------|--------|
| Wind Velocity | 6 kt | 8 kt | 10 kt | 12 kt | 14 kt | 16 kt | 20 kt |
| Beat Angles | 43.1° | 42.0° | 42.0° | 40.1° | 39.0° | 39.0° | 39.8° |
| Beat VMG | 2.76 | 3.27 | 3.70 | 4.01 | 4.18 | 4.25 | 4.23 |
| 52° | 4.20 | 4.98 | 5.49 | 5.74 | 5.89 | 5.98 | 6.01 |
| 60° | 4.43 | 5.24 | 5.66 | 5.88 | 6.04 | 6.16 | 6.25 |
| 75° | 4.60 | 5.40 | 5.79 | 6.01 | 6.20 | 6.38 | 6.62 |
| 90° | 4.58 | 5.50 | 5.94 | 6.21 | 6.43 | 6.55 | 6.83 |
| 110° | 4.63 | 5.54 | 5.98 | 6.29 | 6.61 | 6.89 | 7.24 |
| 120° | 4.48 | 5.42 | 5.91 | 6.21 | 6.53 | 6.84 | 7.35 |
| 135° | 4.07 | 4.96 | 5.65 | 6.01 | 6.30 | 6.62 | 7.20 |
| 150° | 3.52 | 4.39 | 5.15 | 5.72 | 6.03 | 6.31 | 6.88 |
| Run VMG | 3.05 | 3.81 | 4.50 | 5.14 | 5.67 | 5.98 | 6.53 |
| Gybe Angles | 149.0° | 153.0° | 155.0° | 173.0° | 180.0° | 180.0° | 180.0° |

| Time Allowances in secs/NM | | | | | | | |
|----------------------------|--------|--------|-------|-------|-------|-------|-------|
| Wind Velocity | 6 kt | 8 kt | 10 kt | 12 kt | 14 kt | 16 kt | 20 kt |
| Beat VMG | 1306.2 | 1099.6 | 973.4 | 898.4 | 860.9 | 847.9 | 852.0 |
| 52° | 857.1 | 723.1 | 655.9 | 627.1 | 611.0 | 601.8 | 598.5 |
| 60° | 812.3 | 687.2 | 635.6 | 612.1 | 596.0 | 584.3 | 576.3 |
| 75° | 781.9 | 666.5 | 621.5 | 598.9 | 580.8 | 564.5 | 543.4 |
| 90° | 786.5 | 654.2 | 606.3 | 579.6 | 559.5 | 549.6 | 527.3 |
| 110° | 778.0 | 649.3 | 601.8 | 572.0 | 544.5 | 522.6 | 497.3 |
| 120° | 803.1 | 664.4 | 609.5 | 579.5 | 551.6 | 526.4 | 489.6 |
| 135° | 884.7 | 725.3 | 636.7 | 599.0 | 571.1 | 544.1 | 499.9 |
| 150° | 1022.1 | 819.8 | 699.2 | 629.4 | 596.7 | 570.6 | 522.9 |
| Run VMG | 1180.2 | 944.1 | 800.7 | 700.0 | 635.4 | 601.5 | 551.5 |
| Selected Courses | | | | | | | |
| Windward / Leeward | 1243.2 | 1021.9 | 887.1 | 799.2 | 748.2 | 724.7 | 701.7 |
| All purpose | 964.3 | 799.8 | 712.6 | 662.2 | 630.2 | 611.9 | 589.8 |

| Single Number Scoring Options | | |
|-------------------------------|------------------|--------------|
| Course | Time On Distance | Time On Time |
| Windward / Leeward | 838.7 | 0.7154 |
| All purpose | 686.1 | 0.8745 |

Custom scoring options for Estonia

| Single Number | Time On Distance | Time On Time |
|--|------------------|--------------|
| Coastal/Long Distance | 747.5 | 0.8027 |
| Triple Number Coastal/Long Distance Low | 882.1 | 0.6802 |
| Triple Number Coastal/Long Distance Medium | 682.4 | 0.8792 |
| Triple Number Coastal/Long Distance High | 608.2 | 0.9865 |
| Triple Number Windward/Leeward Low | 1132.5 | 0.5298 |
| Triple Number Windward/Leeward Medium | 834.3 | 0.7192 |
| Triple Number Windward/Leeward High | 721.9 | 0.8311 |

| Performance Curve | 6 kt | 8 kt | 10 kt | 12 kt | 14 kt | 16 kt | 20 kt |
|-----------------------|--------|-------|-------|-------|-------|-------|-------|
| Coastal/Long Distance | 1236.9 | 958.8 | 800.8 | 705.6 | 654.9 | 619.9 | 564.6 |

