

**GPH = 568.0**    **CDL = 11.083**

**BOAT**

Class **First 44.7**  
Designer **B.Farr**  
Builder **Beneteau S.A.**  
Age Date **05/2006**  
Series Date **11/2003**  
Offset File **F231.OFF**

**HULL**

Length Overall **13.352 m**  
Maximum Beam **3.968 m**  
Draft **2.545 m**  
Displacement **9,954 kg**  
DLR **6.0549**  
IMS Division **Cruiser/Racer**  
Dynamic Allowance **0.039%**  
Age Allowance **0.487%**

**PROPELLER**

Installation **Strut**  
Type **Folding 3 blades**  
Diameter **0.446m**

**CREW**

Maximum weight **899 kg**  
Minimum weight **674 kg \* when applied**  
Non Manual Power **No**  
Crew Arm Extension

**SAIL AREAS (m<sup>2</sup>)**

	Measured	Rated
Mainsail	<b>60.20</b>	<b>61.14</b>
Headsail Luffed	<b>55.54</b>	<b>55.54</b>
Headsail Flying		
Symmetric	<b>143.26</b>	<b>143.26</b>
Asymmetric	<b>154.86</b>	<b>154.86</b>

\* All asymmetric spinnakers with SHW/SFL > 85%

**SAIL LIMITATIONS**

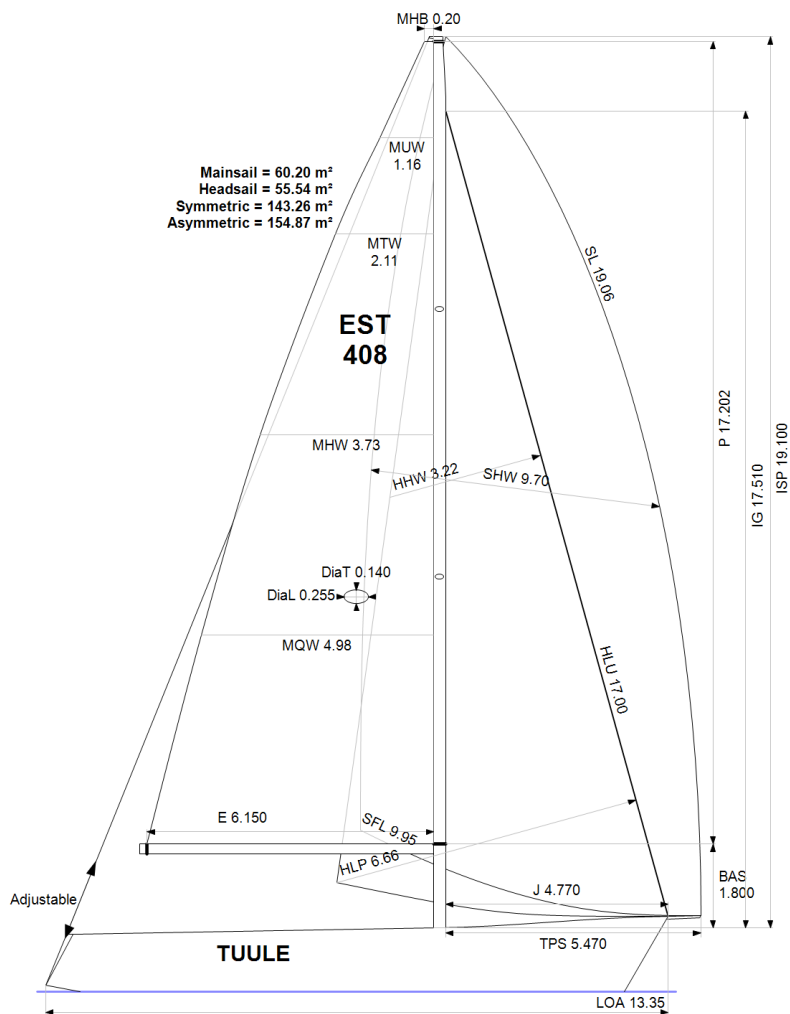
Headsails **6**  
Spinnakers **4** \* Asymmetric SHALL NOT be tacked on the pole

**STABILITY**

Righting Moment **233.9 kg·m**  
Stability Index **N/A**

**OWNER**

The owner certifies that he/she understands his/her responsibilities under ORC Rule and Regulations.



Rated boat velocities in knots

Wind Velocity	6 kt	8 kt	10 kt	12 kt	14 kt	16 kt	20 kt
Beat Angles	42.8°	41.3°	40.5°	39.4°	38.6°	38.6°	38.4°
Beat VMG	3.83	4.62	5.19	5.45	5.57	5.62	5.69
52°	5.83	6.91	7.57	7.81	7.91	7.96	8.02
60°	6.16	7.22	7.79	8.03	8.13	8.18	8.22
75°	6.44	7.44	7.95	8.23	8.42	8.52	8.62
90°	6.39	7.45	7.98	8.30	8.57	8.82	9.14
110°	6.29	7.55	8.17	8.55	8.81	9.02	9.45
120°	6.13	7.40	8.08	8.51	8.95	9.36	9.88
135°	5.49	6.76	7.71	8.21	8.63	9.10	10.15
150°	4.63	5.78	6.81	7.63	8.15	8.54	9.43
Run VMG	4.01	5.01	5.90	6.68	7.32	7.90	8.69
Gybe Angles	143.0°	147.0°	148.0°	155.0°	166.0°	180.0°	180.0°

Time Allowances in secs/NM							
Wind Velocity	6 kt	8 kt	10 kt	12 kt	14 kt	16 kt	20 kt
Beat VMG	940.0	778.7	694.0	660.5	646.8	640.7	632.6
52°	617.5	520.9	475.9	460.8	455.0	452.3	448.9
60°	584.5	498.7	462.4	448.4	443.0	440.1	437.8
75°	559.1	483.8	453.0	437.4	427.7	422.5	417.7
90°	563.0	483.4	451.1	433.8	419.9	408.2	393.8
110°	571.9	476.9	440.7	421.1	408.6	399.0	380.9
120°	587.4	486.5	445.6	422.9	402.1	384.6	364.2
135°	655.4	532.3	467.2	438.3	417.2	395.5	354.6
150°	778.3	622.6	528.3	471.6	441.8	421.7	381.8
Run VMG	898.8	718.9	610.0	539.0	492.0	455.5	414.2
Selected Courses							
Windward / Leeward	919.4	748.8	652.0	599.7	569.4	548.1	523.4
All purpose	706.3	584.3	521.9	490.7	472.3	458.3	439.7

Single Number Scoring Options		
Course	Time On Distance	Time On Time
Windward / Leeward	626.0	0.9584
All purpose	507.6	1.1820

### Custom scoring options for Estonia

Single Number	Time On Distance	Time On Time
Coastal/Long Distance	553.6	1.0839
Triple Number Coastal/Long Distance Low	645.3	0.9298
Triple Number Coastal/Long Distance Medium	504.3	1.1897
Triple Number Coastal/Long Distance High	454.9	1.3191
Triple Number Windward/Leeward Low	834.0	0.7194
Triple Number Windward/Leeward Medium	622.0	0.9646
Triple Number Windward/Leeward High	544.2	1.1026

Performance Curve	6 kt	8 kt	10 kt	12 kt	14 kt	16 kt	20 kt
Coastal/Long Distance	917.3	703.6	588.1	523.8	489.9	463.1	422.1