

GPH = 700.4 **CDL = 7.614**

BOAT

Class **BAVARIA 30 CR**
Designer **JACOPIN**
Builder **BAVARIA YACHTING**
Age Date **01/2005**
Series Date **01/2005**
Offset File **BAVA30CL.OFF**

HULL

Length Overall **9.350 m**
Maximum Beam **3.290 m**
Draft **1.903 m**
Displacement **4,960 kg**
DLR **8.1805**
IMS Division **Cruiser/Racer**
Dynamic Allowance **0.500%**
Age Allowance **0.487%**

PROPELLER

Installation **Strut**
Type **Folding 2 blades**
Diameter **0.411m**

CREW

Maximum weight **550 kg**
Minimum weight **413 kg * when applied**
Non Manual Power **No**
Crew Arm Extension

SAIL AREAS (m²)

	Measured	Rated
Mainsail	27.19	27.76
Headsail Luffed	23.70	23.70
Headsail Flying		
Symmetric	58.46	58.46
Asymmetric		

SAIL LIMITATIONS

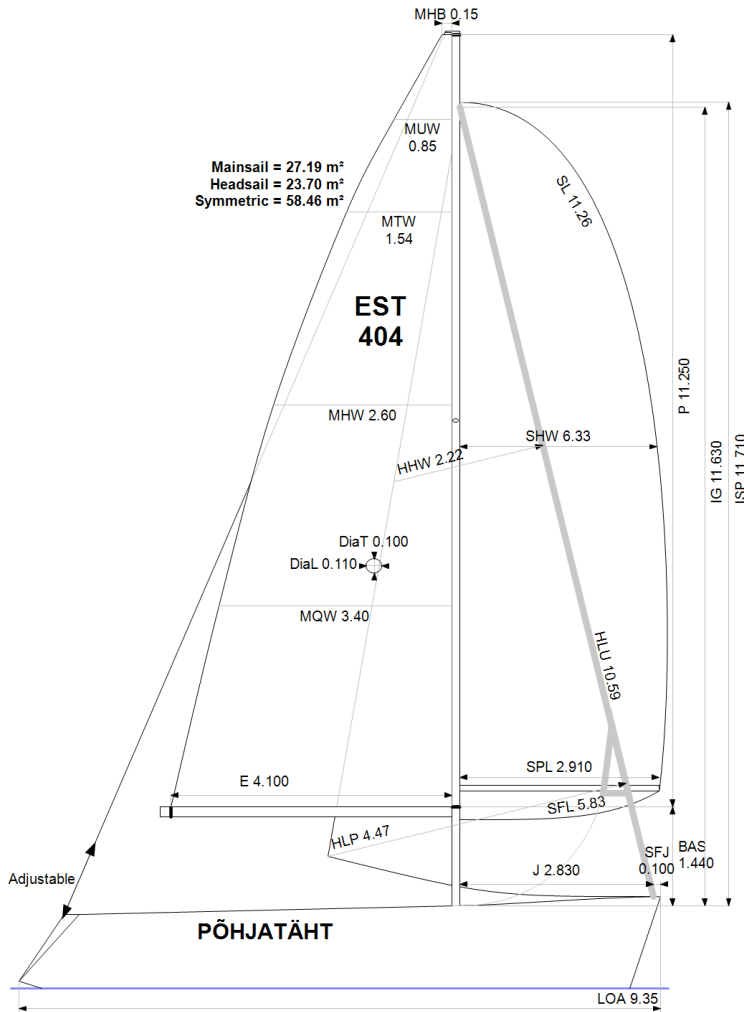
Headsails **1**
Spinnakers **4**

STABILITY

Righting Moment **106.8 kg·m**
Stability Index **N/A**

OWNER

The owner certifies that he/she understands his/her responsibilities under ORC Rule and Regulations.



Rated boat velocities in knots

Wind Velocity	6 kt	8 kt	10 kt	12 kt	14 kt	16 kt	20 kt
Beat Angles	42.8°	41.6°	41.3°	40.5°	38.8°	38.1°	38.1°
Beat VMG	3.01	3.60	4.04	4.44	4.71	4.83	4.85
52°	4.61	5.41	6.04	6.40	6.61	6.73	6.80
60°	4.86	5.70	6.27	6.56	6.75	6.89	7.01
75°	5.06	5.94	6.44	6.70	6.90	7.08	7.37
90°	5.01	6.01	6.58	6.88	7.11	7.24	7.55
110°	5.04	6.07	6.63	6.94	7.24	7.56	8.06
120°	4.88	5.89	6.54	6.88	7.17	7.50	8.13
135°	4.44	5.38	6.21	6.66	6.96	7.26	7.91
150°	3.78	4.75	5.57	6.28	6.67	6.95	7.53
Run VMG	3.28	4.12	4.84	5.53	6.16	6.59	7.13
Gybe Angles	147.0°	152.0°	154.0°	159.0°	180.0°	180.0°	180.0°

Time Allowances in secs/NM							
Wind Velocity	6 kt	8 kt	10 kt	12 kt	14 kt	16 kt	20 kt
Beat VMG	1194.7	1000.9	890.2	811.0	765.0	745.7	741.9
52°	781.0	665.9	596.3	562.3	544.8	534.9	529.2
60°	740.2	631.6	574.3	548.5	533.0	522.4	513.2
75°	711.9	606.5	559.4	537.3	522.0	508.8	488.4
90°	718.1	599.4	547.1	523.0	506.2	496.9	476.9
110°	714.3	593.3	543.3	518.4	497.1	476.4	446.8
120°	737.4	611.1	550.6	523.5	501.8	480.0	442.7
135°	811.0	669.1	579.3	540.3	517.3	496.2	455.1
150°	951.8	758.2	646.7	573.4	539.4	517.8	478.0
Run VMG	1099.0	874.3	743.8	650.7	584.5	546.6	504.8
Selected Courses							
Windward / Leeward	1146.9	937.6	817.0	730.8	674.8	646.2	623.3
All purpose	885.6	733.4	650.3	599.8	567.3	548.9	526.7

Single Number Scoring Options		
Course	Time On Distance	Time On Time
Windward / Leeward	764.5	0.7848
All purpose	622.3	0.9642

Custom scoring options for Estonia

Single Number	Time On Distance	Time On Time
Coastal/Long Distance	679.2	0.8835
Triple Number Coastal/Long Distance Low	809.5	0.7412
Triple Number Coastal/Long Distance Medium	619.6	0.9683
Triple Number Coastal/Long Distance High	545.2	1.1006
Triple Number Windward/Leeward Low	1042.2	0.5757
Triple Number Windward/Leeward Medium	762.8	0.7866
Triple Number Windward/Leeward High	644.7	0.9306

Performance Curve	6 kt	8 kt	10 kt	12 kt	14 kt	16 kt	20 kt
Coastal/Long Distance	1142.1	880.1	734.3	640.0	589.6	556.5	506.8