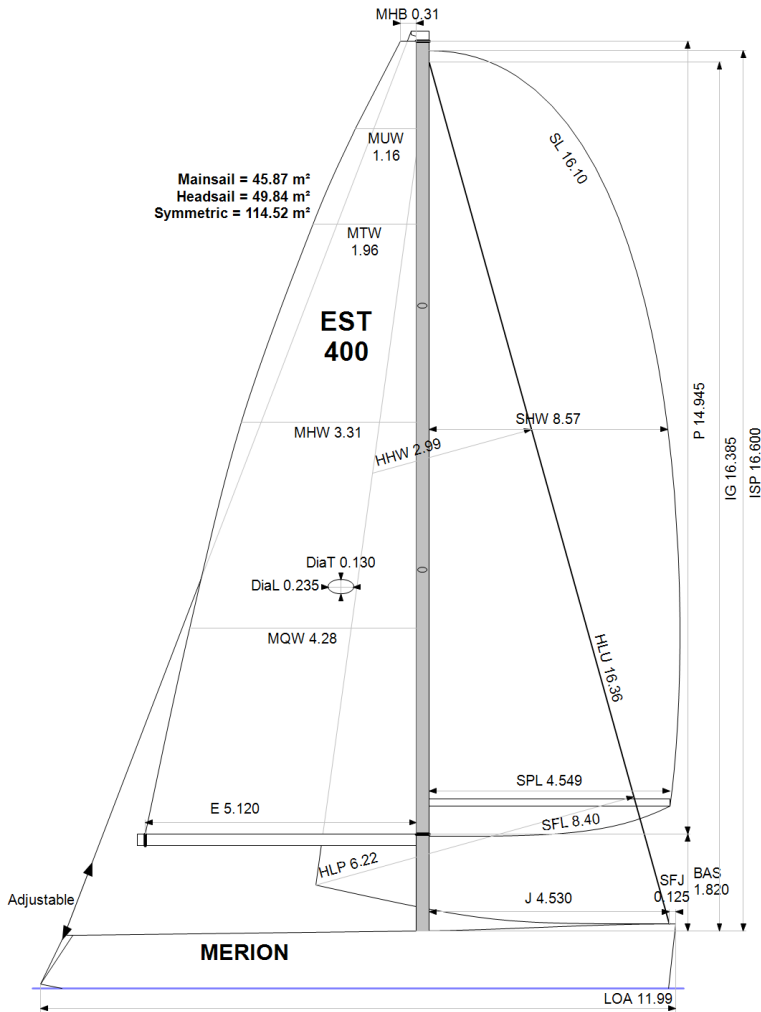


GPH = 565.7 **CDL = 11.260**



BOAT

Class **A 40**
Designer **B.NIVELT**
Builder **ARCHAMBAULT**
Age Date **08/2005**
Series Date **12/2003**
Offset File **A40.OFF**

HULL

Length Overall **11.990 m**
Maximum Beam **3.762 m**
Draft **2.389 m**
Displacement **6,290 kg**
DLR **3.9472**
IMS Division **Cruiser/Racer**
Dynamic Allowance **0.016%**
Age Allowance **0.487%**

PROPELLER

Installation **Strut**
Type **Folding 2 blades**
Diameter **0.410m**

CREW

Maximum weight **980 kg**
Minimum weight **735 kg * when applied**
Non Manual Power **No**
Crew Arm Extension

SAIL AREAS (m²)

	Measured	Rated
Mainsail	45.87	46.78
Headsail Luffed	49.84	49.84
Headsail Flying		
Symmetric	114.52	114.52
Asymmetric		

SAIL LIMITATIONS

Headsails **6**
Spinnakers **4**

STABILITY

Righting Moment **188.6 kg·m**
Stability Index **N/A**

COMMENTS

TPS6,43

OWNER

Rated boat velocities in knots							
Wind Velocity	6 kt	8 kt	10 kt	12 kt	14 kt	16 kt	20 kt
Beat Angles	42.8°	41.3°	39.8°	37.9°	37.1°	36.8°	36.8°
Beat VMG	3.87	4.71	5.34	5.63	5.76	5.82	5.91
52°	5.91	7.04	7.64	7.88	7.99	8.05	8.11
60°	6.25	7.32	7.82	8.08	8.22	8.30	8.37
75°	6.54	7.51	7.96	8.30	8.60	8.79	8.99
90°	6.45	7.50	7.99	8.36	8.77	9.17	9.73
110°	6.06	7.37	8.05	8.55	9.05	9.39	10.09
120°	5.89	7.22	7.95	8.47	9.09	9.73	10.65
135°	5.30	6.59	7.58	8.11	8.63	9.26	10.83
150°	4.46	5.64	6.69	7.54	8.06	8.52	9.71
Run VMG	3.87	4.88	5.80	6.59	7.22	7.80	8.70
Gybe Angles	142.5°	147.0°	149.0°	154.5°	165.0°	180.0°	180.0°

The owner certifies that he/she understands his/her responsibilities under ORC Rule and Regulations.

Time Allowances in secs/NM							
Wind Velocity	6 kt	8 kt	10 kt	12 kt	14 kt	16 kt	20 kt
Beat VMG	929.9	764.1	673.9	639.9	625.4	618.0	609.5
52°	609.5	511.4	471.1	456.7	450.6	447.2	443.8
60°	575.8	492.1	460.3	445.5	438.1	433.7	429.9
75°	550.4	479.7	452.3	433.8	418.6	409.4	400.5
90°	557.8	479.9	450.8	430.9	410.5	392.6	370.1
110°	594.3	488.2	447.5	421.0	397.6	383.3	356.9
120°	611.5	498.3	452.7	424.8	396.0	369.8	338.0
135°	679.4	546.2	475.2	443.7	417.0	388.8	332.5
150°	806.6	638.6	537.8	477.6	446.6	422.3	370.9
Run VMG	931.4	737.4	621.0	546.1	498.3	461.4	413.7
Selected Courses							
Windward / Leeward	930.6	750.7	647.5	593.0	561.8	539.7	511.6
All purpose	713.6	585.8	520.8	487.1	465.2	447.9	423.4

Single Number Scoring Options		
Course	Time On Distance	Time On Time
Windward / Leeward	620.9	0.9663
All purpose	503.5	1.1916

Custom scoring options for Estonia

Single Number	Time On Distance	Time On Time
Coastal/Long Distance	549.3	1.0924
Triple Number Coastal/Long Distance Low	649.7	0.9235
Triple Number Coastal/Long Distance Medium	501.1	1.1974
Triple Number Coastal/Long Distance High	443.0	1.3543
Triple Number Windward/Leeward Low	840.7	0.7137
Triple Number Windward/Leeward Medium	616.5	0.9732
Triple Number Windward/Leeward High	534.7	1.1221

Performance Curve	6 kt	8 kt	10 kt	12 kt	14 kt	16 kt	20 kt
Coastal/Long Distance	930.7	706.0	585.5	519.2	482.9	452.7	405.4