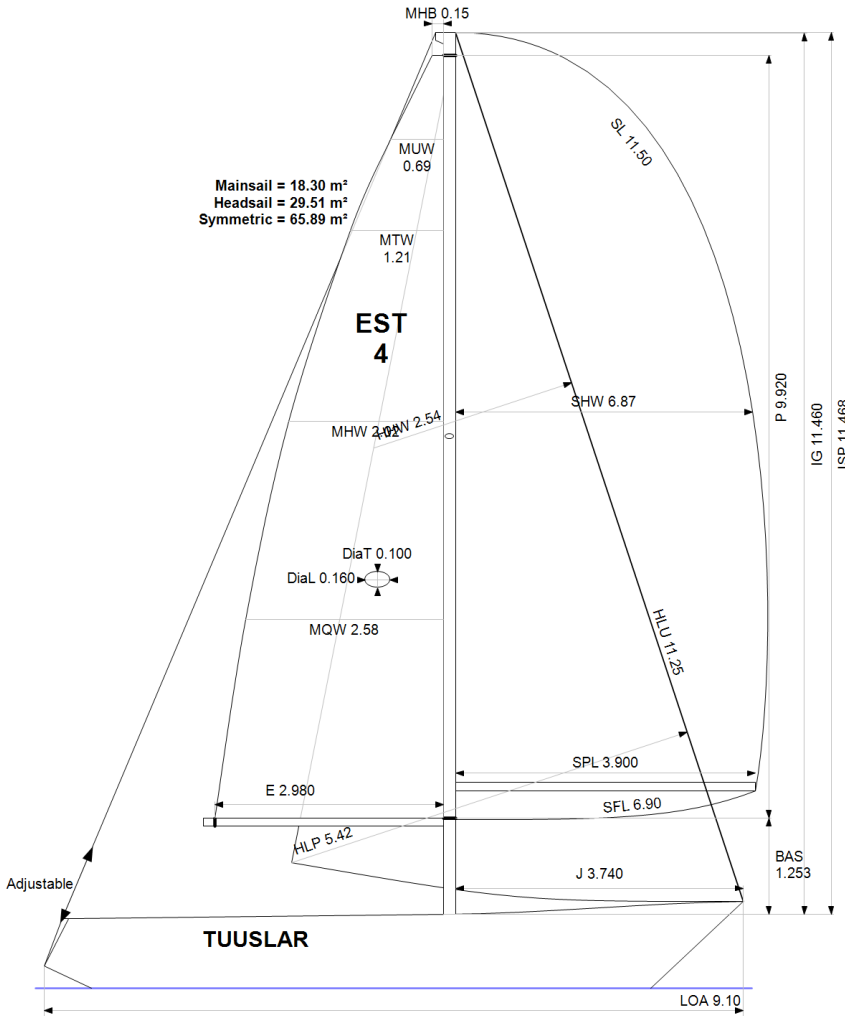


GPH = **729.7** CDL = **6.731**



BOAT

Class **Carter 30**
 Designer **Richard Carter**
 Builder **Teliga**
 Age Date **01/1997**
 Series Date **01/1972**
 Offset File **GR0044.BOF**

HULL

Length Overall **9.100 m**
 Maximum Beam **3.058 m**
 Draft **1.590 m**
 Displacement **3,848 kg**
 DLR **8.8591**
 IMS Division **Cruiser/Racer**
 Dynamic Allowance **0.477%**
 Age Allowance **0.487%**

PROPELLER

Installation **Shaft exposed**
 Type **Folding 2 blades**
 Diameter **0.420m**

CREW

Maximum weight **400 kg**
 Minimum weight **300 kg * when applied**
 Non Manual Power **No**
 Crew Arm Extension

SAIL AREAS (m²)

	Measured	Rated
Mainsail	18.30	18.63
Headsail Luffed	29.51	29.51
Headsail Flying		
Symmetric	65.89	65.89
Asymmetric		

SAIL LIMITATIONS

Headsails **5** * Woven polyester sails
 Spinnakers **4**

STABILITY

Righting Moment **57.8 kg·m**
 Stability Index **N/A**

OWNER

The owner certifies that he/she understands his/her responsibilities under ORC Rule and Regulations.

Rated boat velocities in knots							
Wind Velocity	6 kt	8 kt	10 kt	12 kt	14 kt	16 kt	20 kt
Beat Angles	42.4°	41.3°	42.0°	40.9°	40.1°	39.9°	40.7°
Beat VMG	2.92	3.45	3.88	4.19	4.32	4.37	4.32
52°	4.44	5.20	5.78	6.06	6.21	6.26	6.27
60°	4.69	5.49	5.98	6.22	6.37	6.45	6.48
75°	4.87	5.70	6.13	6.36	6.54	6.69	6.85
90°	4.82	5.70	6.23	6.46	6.60	6.80	7.13
110°	4.87	5.87	6.35	6.66	6.95	7.16	7.40
120°	4.75	5.77	6.31	6.63	6.95	7.26	7.67
135°	4.37	5.31	6.07	6.45	6.75	7.08	7.69
150°	3.76	4.68	5.51	6.12	6.46	6.74	7.34
Run VMG	3.25	4.05	4.78	5.44	6.00	6.36	6.91
Gybe Angles	148.0°	152.0°	151.0°	161.5°	180.0°	180.0°	180.0°

Time Allowances in secs/NM							
Wind Velocity	6 kt	8 kt	10 kt	12 kt	14 kt	16 kt	20 kt
Beat VMG	1234.9	1042.2	927.6	858.8	832.9	823.6	833.0
52°	810.8	691.7	623.0	593.6	580.1	575.1	574.3
60°	767.9	655.6	602.5	578.7	565.2	558.4	555.7
75°	739.2	631.3	587.7	565.8	550.3	538.2	525.6
90°	747.3	632.0	578.2	557.3	545.2	529.8	504.9
110°	738.5	613.6	566.7	540.3	518.2	503.0	486.6
120°	758.6	624.2	571.0	542.8	518.0	496.0	469.3
135°	824.7	678.2	592.9	558.5	533.1	508.5	468.1
150°	958.4	770.0	653.2	587.8	557.7	534.4	490.6
Run VMG	1106.7	888.4	753.0	661.7	599.9	566.1	520.9
Selected Courses							
Windward / Leeward	1170.8	965.3	840.3	760.2	716.4	694.9	676.9
All purpose	909.5	757.2	673.8	627.4	600.7	584.9	567.5

Single Number Scoring Options		
Course	Time On Distance	Time On Time
Windward / Leeward	797.8	0.7521
All purpose	651.2	0.9214

Custom scoring options for Estonia

Single Number	Time On Distance	Time On Time
Coastal/Long Distance	709.0	0.8462
Triple Number Coastal/Long Distance Low	833.3	0.7200
Triple Number Coastal/Long Distance Medium	647.0	0.9274
Triple Number Coastal/Long Distance High	582.3	1.0304
Triple Number Windward/Leeward Low	1068.0	0.5618
Triple Number Windward/Leeward Medium	793.0	0.7566
Triple Number Windward/Leeward High	693.5	0.8652

Performance Curve	6 kt	8 kt	10 kt	12 kt	14 kt	16 kt	20 kt
Coastal/Long Distance	1164.4	906.3	757.8	669.0	624.6	591.8	541.7