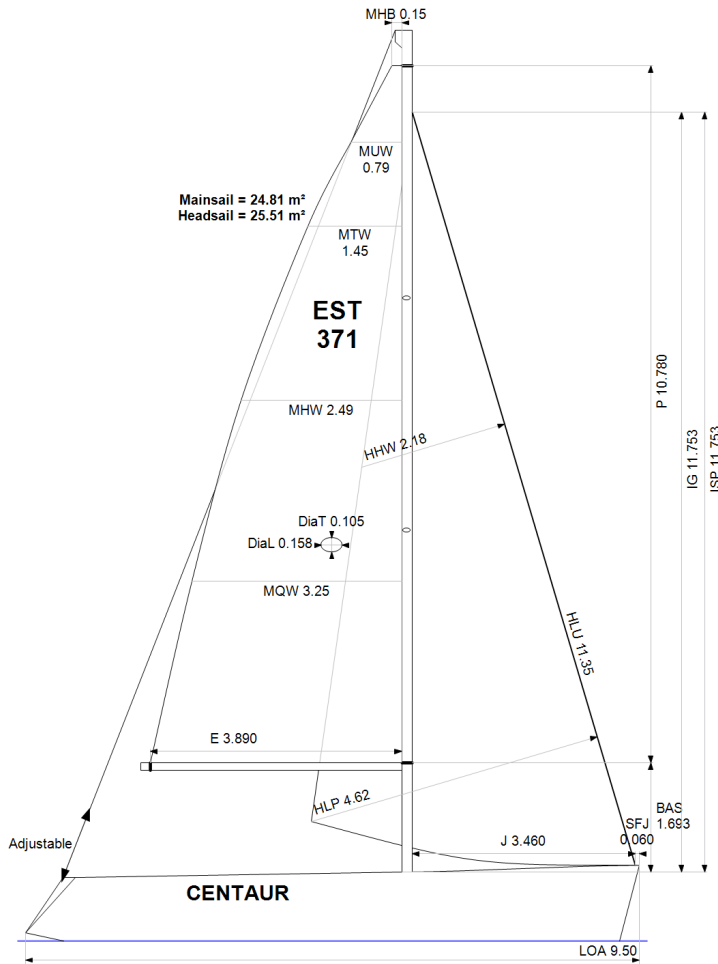


**GPH = 704.6** **CDL = 8.314**



**BOAT**

Class **FIRST 31.7LR**  
Designer **FINOT**  
Builder **Beneteau**  
Age Date **01/2005**  
Series Date **09/1998**  
Offset File **first317.off**

**HULL**

Length Overall **9.500 m**  
Maximum Beam **3.212 m**  
Draft **1.927 m**  
Displacement **3,651 kg**  
DLR **5.2493**  
IMS Division **Cruiser/Racer**  
Dynamic Allowance **0.326%**  
Age Allowance **0.487%**

**PROPELLER**

Installation **Strut**  
Type **Folding 2 blades**  
Diameter **0.405m**

**CREW**

Maximum weight **579 kg**  
Minimum weight **434 kg** \* when applied  
Non Manual Power **No**  
Crew Arm Extension

**SAIL AREAS (m²)**

	Measured	Rated
Mainsail	<b>24.81</b>	<b>25.32</b>
Headsail Luffed	<b>25.51</b>	<b>25.51</b>
Headsail Flying		

Symmetric  
Asymmetric

**SAIL LIMITATIONS**

Headsails **5**  
Spinnakers **0** \* No spinnaker pole aboard

**STABILITY**

Righting Moment **71.8 kg·m**  
Stability Index **N/A**

**OWNER**

*The owner certifies that he/she understands his/her responsibilities under ORC Rule and Regulations.*

Rated boat velocities in knots							
Wind Velocity	6 kt	8 kt	10 kt	12 kt	14 kt	16 kt	20 kt
Beat Angles	42.8°	41.3°	40.5°	39.2°	38.3°	38.3°	39.0°
Beat VMG	3.14	3.81	4.34	4.73	4.88	4.94	4.89
52°	4.82	5.74	6.38	6.73	6.89	6.94	6.96
60°	5.10	6.04	6.59	6.89	7.07	7.15	7.19
75°	5.31	6.26	6.76	7.04	7.28	7.48	7.65
90°	5.23	6.21	6.78	7.09	7.35	7.62	8.12
110°	4.68	5.74	6.52	6.95	7.26	7.59	8.32
120°	4.40	5.40	6.24	6.78	7.12	7.44	8.17
135°	3.79	4.81	5.65	6.36	6.82	7.13	7.77
150°	3.20	4.18	5.02	5.76	6.40	6.83	7.42
Run VMG	2.80	3.70	4.51	5.24	5.91	6.48	7.17
Gybe Angles	168.0°	169.0°	170.0°	171.5°	172.0°	175.0°	177.0°

Time Allowances in secs/NM							
Wind Velocity	6 kt	8 kt	10 kt	12 kt	14 kt	16 kt	20 kt
Beat VMG	1145.6	944.0	830.4	761.5	737.1	729.1	736.5
52°	746.8	627.1	564.4	535.2	522.7	518.5	517.5
60°	706.1	596.5	546.2	522.4	509.3	503.5	501.0
75°	678.5	575.0	532.9	511.3	494.8	481.6	470.5
90°	688.5	580.2	531.1	508.1	490.0	472.2	443.5
110°	769.1	627.5	551.8	517.9	495.7	474.3	432.7
120°	819.0	666.3	576.7	530.6	505.6	484.2	440.8
135°	949.2	748.8	637.2	565.7	527.6	504.7	463.3
150°	1123.4	861.2	716.8	624.6	562.1	526.9	485.1
Run VMG	1287.6	974.2	797.8	686.6	608.7	555.6	502.3
Selected Courses							
Windward / Leeward	1216.6	959.1	814.1	724.0	672.9	642.4	619.4
All purpose	923.6	745.5	649.3	593.3	561.7	542.0	519.9

Single Number Scoring Options		
Course	Time On Distance	Time On Time
Windward / Leeward	766.6	0.7827
All purpose	621.1	0.9660

### Custom scoring options for Estonia

Single Number	Time On Distance	Time On Time
Coastal/Long Distance	679.8	0.8827
Triple Number Coastal/Long Distance Low	834.6	0.7189
Triple Number Coastal/Long Distance Medium	616.8	0.9728
Triple Number Coastal/Long Distance High	538.6	1.1139
Triple Number Windward/Leeward Low	1087.7	0.5516
Triple Number Windward/Leeward Medium	760.8	0.7886
Triple Number Windward/Leeward High	641.4	0.9355

Performance Curve	6 kt	8 kt	10 kt	12 kt	14 kt	16 kt	20 kt
Coastal/Long Distance	1223.7	902.5	733.9	633.9	583.5	548.8	496.5

