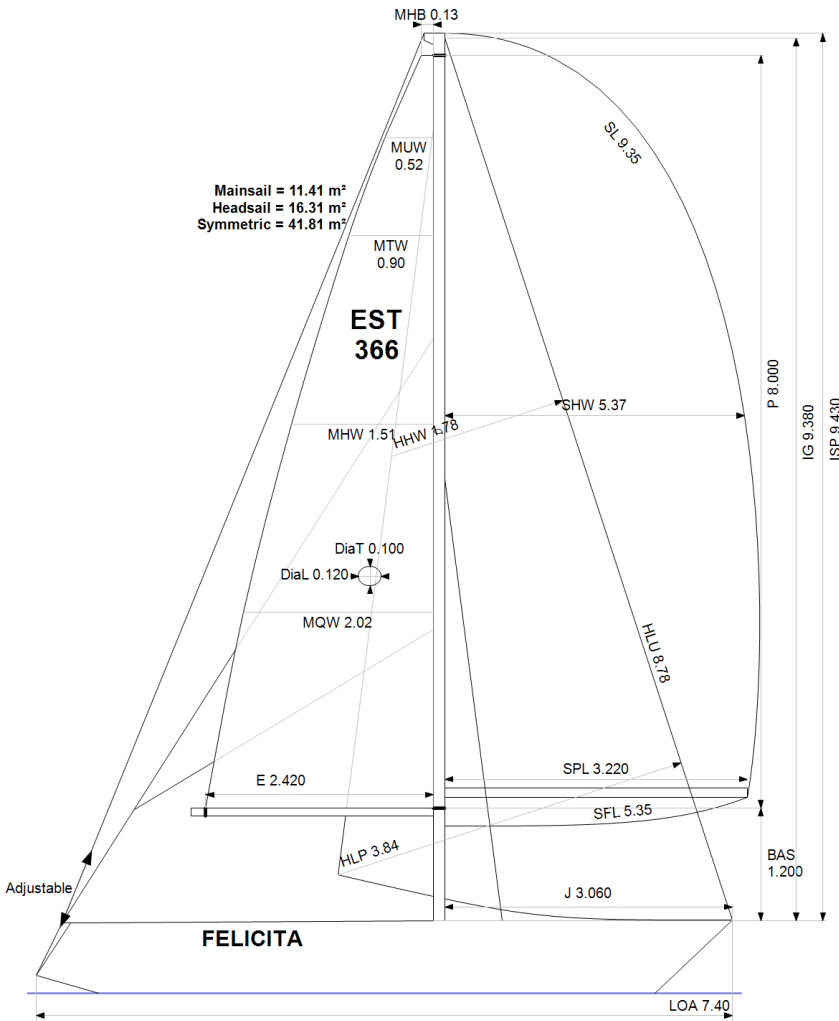


**GPH = 792.0**    **CDL = 5.482**



**BOAT**

Class **BIRDIE 24**  
Designer **Harry Becker**  
Builder  
Age Date **01/1976**  
Series Date **01/1976**  
Offset File **BIRDIE24.off**

**HULL**

Length Overall **7.400 m**  
Maximum Beam **2.412 m**  
Draft **1.238 m**  
Displacement **1,800 kg**  
DLR **8.2315**  
IMS Division **Cruiser/Racer**  
Dynamic Allowance **0.375%**  
Age Allowance **0.487%**

**PROPELLER**

Installation **No Propeller**  
Type **N/A**  
Diameter **N/A**

**CREW**

Maximum weight **300 kg**  
Minimum weight **215 kg \* when applied**  
Non Manual Power **No**  
Crew Arm Extension

**SAIL AREAS (m²)**

	Measured	Rated
Mainsail	<b>11.41</b>	<b>11.57</b>
Headsail Luffed	<b>16.31</b>	<b>16.31</b>
Headsail Flying		
Symmetric	<b>41.81</b>	<b>41.81</b>
Asymmetric		

**SAIL LIMITATIONS**

Headsails **5**  
Spinnakers **4**

**STABILITY**

Righting Moment **31.3 kg·m**  
Stability Index **N/A**

**OWNER**

*The owner certifies that he/she understands his/her responsibilities under ORC Rule and Regulations.*

Rated boat velocities in knots							
Wind Velocity	6 kt	8 kt	10 kt	12 kt	14 kt	16 kt	20 kt
Beat Angles	43.9°	42.8°	42.8°	42.0°	40.7°	40.5°	41.6°
Beat VMG	2.58	3.07	3.44	3.77	3.98	4.04	3.98
52°	3.98	4.70	5.22	5.53	5.71	5.79	5.79
60°	4.22	4.98	5.43	5.68	5.85	5.97	6.01
75°	4.39	5.16	5.58	5.81	6.01	6.18	6.40
90°	4.49	5.37	5.81	6.05	6.16	6.27	6.64
110°	4.62	5.49	5.91	6.23	6.55	6.78	7.03
120°	4.50	5.41	5.86	6.19	6.53	6.85	7.30
135°	4.13	5.04	5.65	5.99	6.31	6.65	7.29
150°	3.58	4.46	5.21	5.71	6.01	6.31	6.92
Run VMG	3.10	3.86	4.55	5.17	5.64	5.94	6.52
Gybe Angles	149.0°	152.0°	154.0°	173.0°	180.0°	180.0°	180.0°

Time Allowances in secs/NM							
Wind Velocity	6 kt	8 kt	10 kt	12 kt	14 kt	16 kt	20 kt
Beat VMG	1395.0	1173.2	1045.4	955.4	903.5	890.5	905.0
52°	903.6	766.2	690.2	651.4	630.6	621.6	621.5
60°	852.5	723.6	663.1	633.9	615.0	603.1	599.3
75°	819.8	697.2	644.8	619.1	599.5	582.2	562.9
90°	801.8	669.9	619.3	595.4	584.4	574.2	541.8
110°	779.7	655.4	609.5	577.5	549.9	531.3	512.3
120°	800.3	665.9	614.8	581.7	551.4	525.5	493.3
135°	870.7	714.8	636.9	601.1	570.1	541.1	494.0
150°	1006.0	807.8	690.9	630.5	599.0	570.6	520.1
Run VMG	1161.6	931.6	791.0	696.6	638.3	606.0	552.3
Selected Courses							
Windward / Leeward	1278.3	1052.4	918.2	826.0	770.9	748.2	728.7
All purpose	989.6	822.6	735.0	681.6	647.1	628.7	608.3

Single Number Scoring Options		
Course	Time On Distance	Time On Time
Windward / Leeward	866.0	0.6928
All purpose	705.9	0.8500

### Custom scoring options for Estonia

Single Number	Time On Distance	Time On Time
Coastal/Long Distance	769.1	0.7801
Triple Number Coastal/Long Distance Low	906.1	0.6622
Triple Number Coastal/Long Distance Medium	702.5	0.8541
Triple Number Coastal/Long Distance High	625.7	0.9590
Triple Number Windward/Leeward Low	1165.3	0.5149
Triple Number Windward/Leeward Medium	861.8	0.6962
Triple Number Windward/Leeward High	746.5	0.8037

Performance Curve	6 kt	8 kt	10 kt	12 kt	14 kt	16 kt	20 kt
Coastal/Long Distance	1266.6	985.3	826.7	727.6	672.7	636.1	579.2