

**GPH = 762.6**    **CDL = 6.350**

**BOAT**

Class **FENIX**  
Designer **Pelle Petterson**  
Builder **Pelle Petterson AB**  
Age Date **01/1981**  
Series Date **01/1981**  
Offset File **fenix3.off**

**HULL**

Length Overall **8.300 m**  
Maximum Beam **2.894 m**  
Draft **1.583 m**  
Displacement **3,070 kg**  
DLR **8.7414**  
IMS Division **Cruiser/Racer**  
Dynamic Allowance **0.480%**  
Age Allowance **0.487%**

**PROPELLER**

Installation **Strut**  
Type **Folding 2 blades**  
Diameter **0.340m**

**CREW**

Maximum weight **414 kg**  
Minimum weight **311 kg \* when applied**  
Non Manual Power **No**  
Crew Arm Extension

**SAIL AREAS (m<sup>2</sup>)**

	Measured	Rated
Mainsail	<b>20.61</b>	<b>20.95</b>
Headsail Luffed	<b>18.06</b>	<b>18.06</b>
Headsail Flying		
Symmetric	<b>39.38</b>	<b>39.38</b>
Asymmetric		

**SAIL LIMITATIONS**

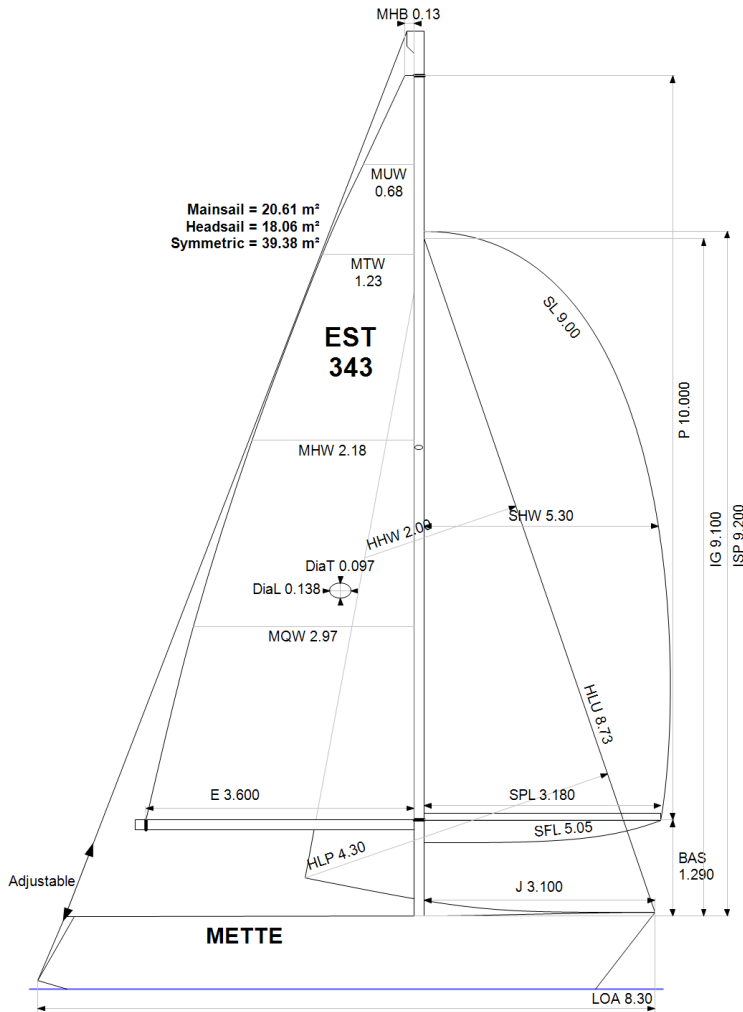
Headsails **5**  
Spinnakers **4**

**STABILITY**

Righting Moment **52.0 kg·m**  
Stability Index **N/A**

**OWNER**

*The owner certifies that he/she understands his/her responsibilities under ORC Rule and Regulations.*



Rated boat velocities in knots

Wind Velocity	6 kt	8 kt	10 kt	12 kt	14 kt	16 kt	20 kt
Beat Angles	44.3°	42.8°	42.4°	41.6°	40.1°	39.8°	40.3°
Beat VMG	2.69	3.24	3.65	4.02	4.26	4.34	4.30
52°	4.16	4.93	5.52	5.90	6.10	6.20	6.22
60°	4.41	5.21	5.76	6.06	6.26	6.38	6.43
75°	4.59	5.42	5.94	6.20	6.40	6.58	6.80
90°	4.64	5.60	6.14	6.44	6.67	6.79	7.07
110°	4.66	5.63	6.17	6.49	6.81	7.12	7.55
120°	4.50	5.47	6.08	6.41	6.71	7.03	7.64
135°	4.02	4.95	5.75	6.19	6.49	6.79	7.43
150°	3.47	4.38	5.18	5.85	6.23	6.50	7.09
Run VMG	3.00	3.81	4.51	5.20	5.79	6.18	6.72
Gybe Angles	149.0°	153.5°	157.0°	170.0°	180.0°	180.0°	180.0°

Time Allowances in secs/NM							
Wind Velocity	6 kt	8 kt	10 kt	12 kt	14 kt	16 kt	20 kt
Beat VMG	1337.4	1112.4	986.4	895.5	844.3	829.8	836.4
52°	865.7	730.4	652.4	610.6	589.8	580.9	578.9
60°	816.6	690.4	624.9	593.7	575.4	564.6	559.9
75°	784.3	663.7	606.4	580.3	562.1	546.9	529.4
90°	775.5	642.7	585.9	558.6	539.7	530.3	509.5
110°	772.6	639.3	583.1	554.4	528.7	505.6	476.6
120°	799.6	658.5	591.7	561.7	536.8	511.9	471.3
135°	894.5	726.8	626.1	581.4	554.8	529.9	484.5
150°	1039.0	821.2	694.6	615.7	578.3	553.7	507.8
Run VMG	1199.7	944.7	797.6	692.9	621.4	582.8	535.8
Selected Courses							
Windward / Leeward	1268.5	1028.5	892.0	794.2	732.9	706.3	686.1
All purpose	975.3	800.9	707.0	649.4	613.0	594.5	573.5

Single Number Scoring Options		
Course	Time On Distance	Time On Time
Windward / Leeward	834.5	0.7190
All purpose	675.8	0.8878

### Custom scoring options for Estonia

Single Number	Time On Distance	Time On Time
Coastal/Long Distance	738.5	0.8125
Triple Number Coastal/Long Distance Low	888.1	0.6756
Triple Number Coastal/Long Distance Medium	672.1	0.8927
Triple Number Coastal/Long Distance High	591.2	1.0148
Triple Number Windward/Leeward Low	1148.5	0.5224
Triple Number Windward/Leeward Medium	831.0	0.7220
Triple Number Windward/Leeward High	705.4	0.8506

Performance Curve	6 kt	8 kt	10 kt	12 kt	14 kt	16 kt	20 kt
Coastal/Long Distance	1261.6	963.5	799.6	694.1	637.6	602.1	547.7