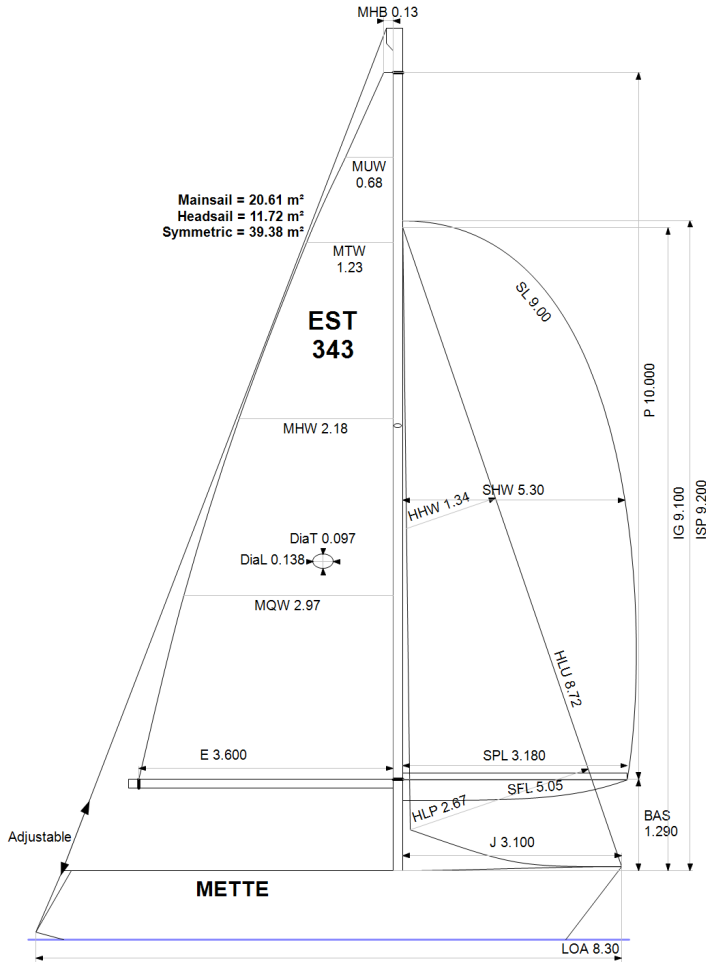


**GPH = 785.3** **CDL = 6.004**



**BOAT**

Class **FENIX**  
Designer **Pelle Petterson**  
Builder **Pelle Petterson AB**  
Age Date **01/1981**  
Series Date **01/1981**  
Offset File **fenix3.off**

**HULL**

Length Overall **8.300 m**  
Maximum Beam **2.894 m**  
Draft **1.583 m**  
Displacement **3,070 kg**  
DLR **8.7414**  
IMS Division **Cruiser/Racer**  
Dynamic Allowance **0.487%**  
Age Allowance **0.487%**

**PROPELLER**

Installation **Strut**  
Type **Folding 2 blades**  
Diameter **0.340m**

**CREW**

Maximum weight **200 kg**  
Minimum weight **120 kg** \* when applied  
Non Manual Power **No**  
Crew Arm Extension

**SAIL AREAS (m²)**

	Measured	Rated
Mainsail	<b>20.61</b>	<b>20.95</b>
Headsail Luffed	<b>11.72</b>	<b>12.07</b>
Headsail Flying		
Symmetric	<b>39.38</b>	<b>39.38</b>
Asymmetric		

**SAIL LIMITATIONS**

Headsails **5**  
Spinnakers **4**

**STABILITY**

Righting Moment **52.0 kg·m**  
Stability Index **N/A**

**OWNER**

*The owner certifies that he/she understands his/her responsibilities under ORC Rule and Regulations.*

Rated boat velocities in knots							
Wind Velocity	6 kt	8 kt	10 kt	12 kt	14 kt	16 kt	20 kt
Beat Angles	44.3°	42.6°	42.0°	42.2°	42.0°	42.0°	43.1°
Beat VMG	2.52	3.05	3.43	3.76	4.00	4.06	3.97
52°	3.90	4.62	5.19	5.66	5.91	6.01	5.99
60°	4.14	4.88	5.48	5.88	6.11	6.22	6.24
75°	4.35	5.17	5.80	6.07	6.27	6.43	6.60
90°	4.63	5.57	6.12	6.39	6.51	6.60	6.88
110°	4.66	5.62	6.16	6.48	6.78	7.06	7.32
120°	4.50	5.47	6.08	6.40	6.70	7.01	7.57
135°	4.03	4.95	5.75	6.19	6.49	6.79	7.42
150°	3.46	4.38	5.18	5.84	6.22	6.50	7.09
Run VMG	3.00	3.81	4.51	5.19	5.78	6.17	6.71
Gybe Angles	149.0°	153.0°	156.0°	170.0°	180.0°	180.0°	180.0°

Time Allowances in secs/NM							
Wind Velocity	6 kt	8 kt	10 kt	12 kt	14 kt	16 kt	20 kt
Beat VMG	1428.4	1180.4	1048.3	956.9	900.8	886.4	906.8
52°	923.9	779.3	693.7	635.9	608.7	598.9	600.9
60°	869.4	738.5	657.2	611.8	589.6	579.0	576.5
75°	827.4	696.0	620.2	593.0	574.3	559.9	545.3
90°	778.2	646.8	588.1	563.1	552.7	545.2	523.2
110°	772.5	640.7	584.2	555.6	531.2	510.2	491.9
120°	799.1	658.7	592.1	562.3	537.7	513.5	475.9
135°	894.3	726.7	626.1	581.5	554.8	530.0	485.0
150°	1039.3	821.3	694.9	616.0	578.5	553.8	507.9
Run VMG	1200.0	945.2	798.1	694.1	622.5	583.6	536.1
Selected Courses							
Windward / Leeward	1314.2	1062.8	923.2	825.5	761.6	735.0	721.5
All purpose	1006.3	825.5	727.3	667.7	630.5	612.3	596.3

Single Number Scoring Options		
Course	Time On Distance	Time On Time
Windward / Leeward	866.2	0.6927
All purpose	695.8	0.8623

### Custom scoring options for Estonia

Single Number	Time On Distance	Time On Time
Coastal/Long Distance	761.1	0.7883
Triple Number Coastal/Long Distance Low	915.9	0.6551
Triple Number Coastal/Long Distance Medium	691.4	0.8678
Triple Number Coastal/Long Distance High	610.9	0.9822
Triple Number Windward/Leeward Low	1188.6	0.5048
Triple Number Windward/Leeward Medium	861.8	0.6962
Triple Number Windward/Leeward High	736.6	0.8146

Performance Curve	6 kt	8 kt	10 kt	12 kt	14 kt	16 kt	20 kt
Coastal/Long Distance	1302.8	993.5	824.9	716.0	656.2	619.0	562.8

