

**GPH = 703.2 CDL = 6.760**

**BOAT**

Class **X-79**  
Designer **NIELS JEPPESEN**  
Builder **X-YACHTS**  
Age Date **01/1981**  
Series Date **01/1979**  
Offset File **X79.OD+.OFF**

**HULL**

Length Overall **7.927 m**  
Maximum Beam **2.860 m**  
Draft **1.387 m**  
Displacement **1,771 kg**  
DLR **6.3976**  
IMS Division **Cruiser/Racer**  
Dynamic Allowance **0.189%**  
Age Allowance **0.487%**

**PROPELLER**

Installation **No Propeller**  
Type **N/A**  
Diameter **N/A**

**CREW**

Maximum weight **400 kg**  
Minimum weight **300 kg \* when applied**  
Non Manual Power **No**  
Crew Arm Extension

**SAIL AREAS (m<sup>2</sup>)**

	Measured	Rated
Mainsail	<b>20.41</b>	<b>20.75</b>
Headsail Luffed	<b>15.60</b>	<b>15.60</b>
Headsail Flying		
Symmetric	<b>39.81</b>	<b>39.81</b>
Asymmetric	<b>40.07</b>	<b>40.07</b>

\* 1 asymmetric(s) with SHW/SFL < 85%

**SAIL LIMITATIONS**

Headsails **5**  
Spinnakers **4 \* Asymmetric SHALL NOT be tacked on the pole**

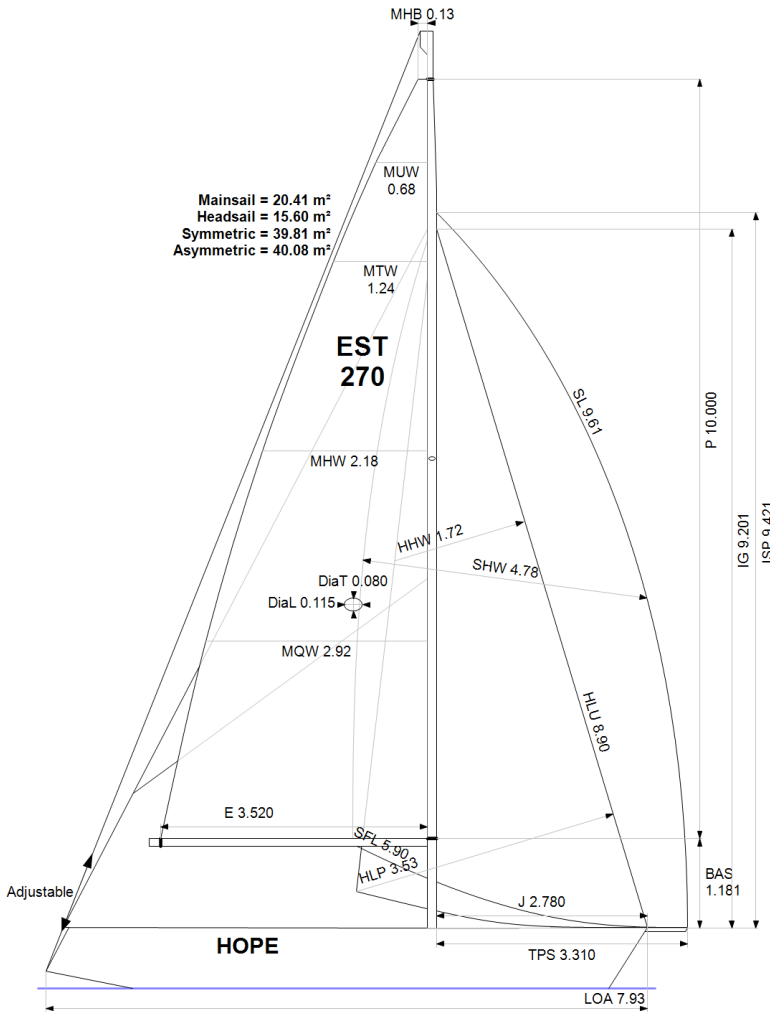
**STABILITY**

Righting Moment **38.6 kg·m**  
Stability Index **N/A**

**COMMENTS**

Lisatud 105 kg ballasti

**OWNER**



Rated boat velocities in knots

Wind Velocity	6 kt	8 kt	10 kt	12 kt	14 kt	16 kt	20 kt
Beat Angles	42.8°	41.8°	40.5°	38.8°	38.3°	38.3°	39.2°
Beat VMG	3.03	3.65	4.13	4.44	4.53	4.56	4.53
52°	4.60	5.47	5.96	6.22	6.35	6.40	6.41
60°	4.90	5.73	6.12	6.38	6.57	6.65	6.69
75°	5.11	5.91	6.31	6.56	6.83	7.05	7.21
90°	5.32	6.10	6.52	6.90	7.15	7.30	7.71
110°	5.18	6.04	6.49	6.94	7.39	7.84	8.63
120°	4.94	5.88	6.37	6.82	7.26	7.74	9.23
135°	4.42	5.43	6.09	6.49	6.92	7.34	8.42
150°	3.77	4.73	5.57	6.14	6.51	6.91	7.74
Run VMG	3.27	4.10	4.86	5.54	6.07	6.43	7.18
Gybe Angles	147.0°	151.5°	154.0°	171.0°	180.0°	180.0°	180.0°

The owner certifies that he/she understands his/her responsibilities under ORC Rule and Regulations.

Time Allowances in secs/NM							
Wind Velocity	6 kt	8 kt	10 kt	12 kt	14 kt	16 kt	20 kt
Beat VMG	1186.5	987.1	872.4	811.5	794.3	789.2	795.5
52°	782.4	658.3	603.7	578.3	566.9	562.2	561.8
60°	734.4	628.8	588.3	564.2	548.3	541.3	537.9
75°	705.1	609.3	570.2	549.1	526.9	510.5	499.2
90°	676.9	590.1	552.2	521.8	503.7	493.2	467.1
110°	694.8	596.5	554.9	518.8	487.4	459.3	417.0
120°	728.2	612.7	565.0	528.2	496.1	465.2	390.0
135°	814.2	662.6	591.5	554.3	520.2	490.5	427.3
150°	954.6	760.5	646.5	586.3	552.8	521.1	465.3
Run VMG	1102.3	878.4	740.9	650.0	592.7	559.5	501.2
Selected Courses							
Windward / Leeward	1144.4	932.7	806.6	730.7	693.5	674.4	648.3
All purpose	877.2	729.3	651.7	605.4	578.0	560.2	532.4

Single Number Scoring Options		
Course	Time On Distance	Time On Time
Windward / Leeward	769.6	0.7796
All purpose	627.0	0.9570

### Custom scoring options for Estonia

Single Number	Time On Distance	Time On Time
Coastal/Long Distance	683.2	0.8782
Triple Number Coastal/Long Distance Low	803.3	0.7469
Triple Number Coastal/Long Distance Medium	624.3	0.9611
Triple Number Coastal/Long Distance High	554.2	1.0826
Triple Number Windward/Leeward Low	1038.6	0.5777
Triple Number Windward/Leeward Medium	763.6	0.7858
Triple Number Windward/Leeward High	669.4	0.8963

Performance Curve	6 kt	8 kt	10 kt	12 kt	14 kt	16 kt	20 kt
Coastal/Long Distance	1140.2	875.8	730.5	644.9	601.3	567.2	501.6