

**GPH = 776.3** **CDL = 5.812**

**BOAT**

Class **ALBIN 78**  
Designer **Peter Norlin**  
Builder  
Age Date **01/1984**  
Series Date **01/1978**  
Offset File **Albin78\_sc.off**

**HULL**

Length Overall **7.800 m**  
Maximum Beam **2.760 m**  
Draft **1.461 m**  
Displacement **2,350 kg**  
DLR **9.4651**  
IMS Division **Cruiser/Racer**  
Dynamic Allowance **0.543%**  
Age Allowance **0.487%**

**PROPELLER**

Installation **Strut**  
Type **Folding 3 blades**  
Diameter **0.360m**

**CREW**

Maximum weight **300 kg**  
Minimum weight **215 kg \* when applied**  
Non Manual Power **No**  
Crew Arm Extension

**SAIL AREAS (m<sup>2</sup>)**

	Measured	Rated
Mainsail	<b>15.04</b>	<b>15.22</b>
Headsail Luffed	<b>17.78</b>	<b>17.78</b>
Headsail Flying		
Symmetric	<b>38.47</b>	<b>38.47</b>
Asymmetric		

**SAIL LIMITATIONS**

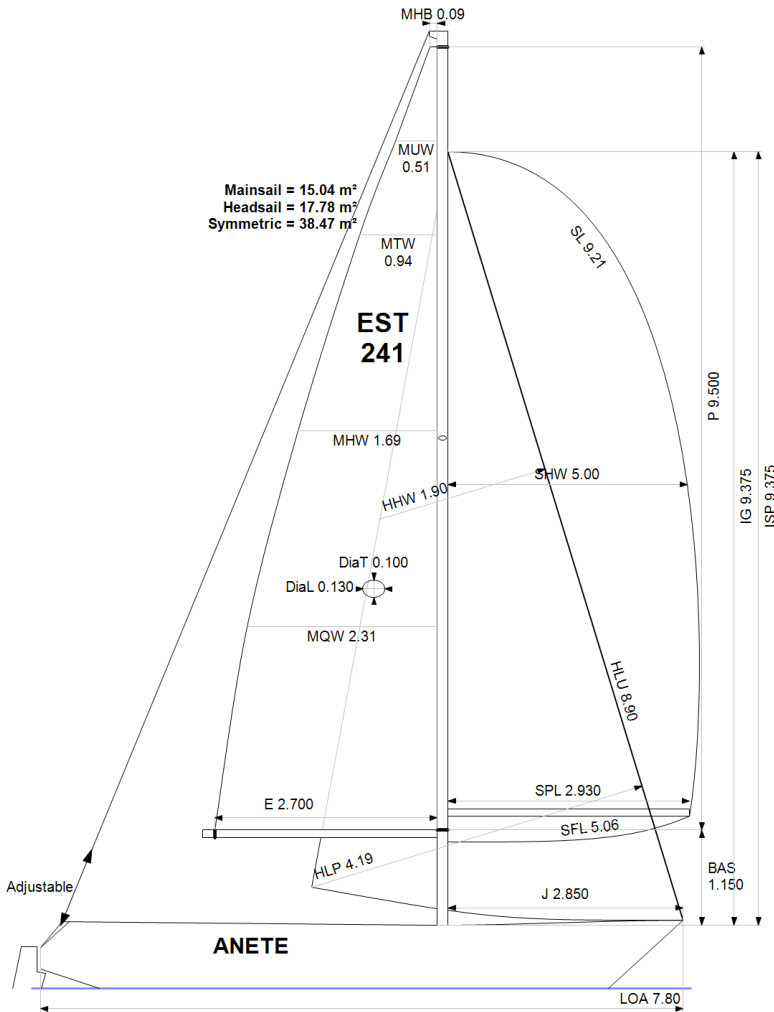
Headsails **5** \* Woven polyester sails  
Spinnakers **4**

**STABILITY**

Righting Moment **30.6 kg·m**  
Stability Index **N/A**

**OWNER**

*The owner certifies that he/she understands his/her responsibilities under ORC Rule and Regulations.*



Rated boat velocities in knots							
Wind Velocity	6 kt	8 kt	10 kt	12 kt	14 kt	16 kt	20 kt
Beat Angles	42.8°	41.6°	41.6°	40.5°	40.1°	40.1°	41.1°
Beat VMG	2.74	3.26	3.65	3.94	4.09	4.13	4.08
52°	4.17	4.91	5.42	5.69	5.83	5.90	5.91
60°	4.39	5.17	5.61	5.84	5.99	6.09	6.14
75°	4.55	5.35	5.75	5.97	6.15	6.31	6.52
90°	4.56	5.46	5.91	6.17	6.33	6.43	6.75
110°	4.61	5.53	5.97	6.27	6.57	6.83	7.11
120°	4.47	5.40	5.90	6.20	6.50	6.80	7.29
135°	4.05	4.94	5.64	6.00	6.29	6.60	7.17
150°	3.51	4.37	5.13	5.71	6.03	6.30	6.86
Run VMG	3.04	3.80	4.48	5.12	5.65	5.98	6.51
Gybe Angles	149.0°	153.0°	155.0°	172.0°	180.0°	180.0°	180.0°

Time Allowances in secs/NM							
Wind Velocity	6 kt	8 kt	10 kt	12 kt	14 kt	16 kt	20 kt
Beat VMG	1312.6	1105.1	985.8	913.4	881.2	871.2	881.8
52°	862.8	733.0	663.9	632.9	617.2	609.8	608.6
60°	819.3	696.3	642.0	616.8	601.4	591.3	586.5
75°	790.5	672.3	626.2	602.9	585.3	570.6	552.5
90°	789.9	659.2	609.2	583.7	569.0	560.0	533.7
110°	781.1	651.1	603.3	574.2	548.1	527.2	506.5
120°	806.2	666.5	610.3	580.6	553.9	529.3	494.1
135°	888.3	728.2	637.9	599.7	572.1	545.8	502.0
150°	1026.5	822.9	701.7	630.6	597.5	571.8	524.7
Run VMG	1185.3	947.6	803.9	702.5	636.9	602.5	553.2
Selected Courses							
Windward / Leeward	1249.0	1026.3	894.8	808.0	759.1	736.9	717.5
All purpose	969.4	804.4	717.8	667.7	637.5	620.4	600.7

Single Number Scoring Options		
Course	Time On Distance	Time On Time
Windward / Leeward	847.8	0.7077
All purpose	692.4	0.8666

### Custom scoring options for Estonia

Single Number	Time On Distance	Time On Time
Coastal/Long Distance	753.9	0.7959
Triple Number Coastal/Long Distance Low	886.9	0.6765
Triple Number Coastal/Long Distance Medium	688.2	0.8718
Triple Number Coastal/Long Distance High	617.3	0.9720
Triple Number Windward/Leeward Low	1137.7	0.5274
Triple Number Windward/Leeward Medium	842.9	0.7118
Triple Number Windward/Leeward High	735.2	0.8161

Performance Curve	6 kt	8 kt	10 kt	12 kt	14 kt	16 kt	20 kt
Coastal/Long Distance	1242.6	963.3	807.2	712.0	662.8	628.4	572.9