

GPH = **636.7** CDL = **8.917**

BOAT

Class **GUYLINE 355**
Designer **LÖNNGREN**
Builder **OÜ GLOBOTRON**
Age Date **01/1998**
Series Date **06/1997**
Offset File **GUYLINE355-EST239.off**

HULL

Length Overall **10.646 m**
Maximum Beam **3.452 m**
Draft **1.975 m**
Displacement **5,707 kg**
DLR **6.7633**
IMS Division **Cruiser/Racer**
Dynamic Allowance **0.134%**
Age Allowance **0.487%**

PROPELLER

Installation **Strut**
Type **Folding 2 blades**
Diameter **0.410m**

CREW

Maximum weight **640 kg**
Minimum weight **480 kg * when applied**
Non Manual Power **No**
Crew Arm Extension

SAIL AREAS (m²)

	Measured	Rated
Mainsail	34.43	35.11
Headsail Luffed	37.93	37.93
Headsail Flying		
Symmetric	88.53	88.53
Asymmetric		

SAIL LIMITATIONS

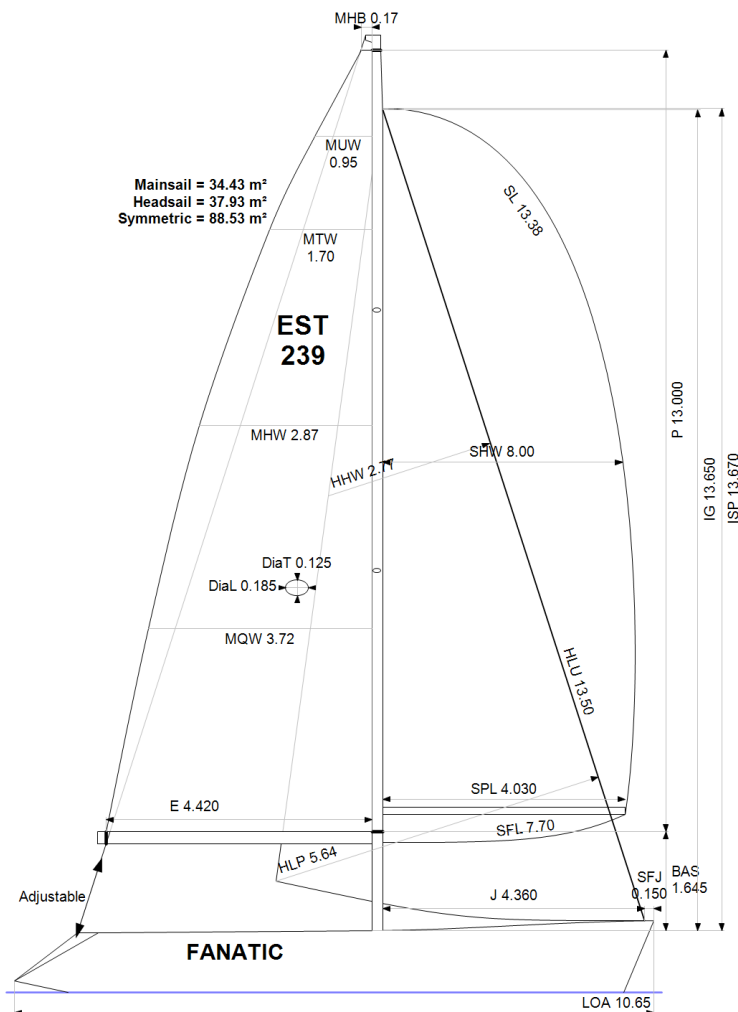
Headsails **5**
Spinnakers **4**

STABILITY

Righting Moment **112.6 kg·m**
Stability Index **113.5**

OWNER

The owner certifies that he/she understands his/her responsibilities under ORC Rule and Regulations.



Rated boat velocities in knots

Wind Velocity	6 kt	8 kt	10 kt	12 kt	14 kt	16 kt	20 kt
Beat Angles	42.8°	41.3°	40.9°	39.4°	38.6°	38.3°	38.3°
Beat VMG	3.39	4.07	4.61	4.92	5.05	5.11	5.14
52°	5.18	6.11	6.73	7.01	7.13	7.18	7.21
60°	5.48	6.41	6.92	7.17	7.31	7.38	7.42
75°	5.72	6.62	7.06	7.32	7.52	7.68	7.82
90°	5.64	6.60	7.11	7.36	7.60	7.83	8.22
110°	5.52	6.66	7.22	7.58	7.92	8.17	8.53
120°	5.37	6.52	7.15	7.53	7.90	8.29	8.89
135°	4.89	5.98	6.83	7.28	7.63	8.02	8.87
150°	4.11	5.16	6.11	6.86	7.27	7.60	8.34
Run VMG	3.56	4.47	5.29	6.03	6.65	7.13	7.78
Gybe Angles	145.5°	150.0°	150.5°	157.0°	180.0°	180.0°	180.0°

Time Allowances in secs/NM							
Wind Velocity	6 kt	8 kt	10 kt	12 kt	14 kt	16 kt	20 kt
Beat VMG	1061.1	884.2	780.9	731.1	712.3	704.2	700.9
52°	695.4	588.8	534.7	513.3	505.1	501.1	499.1
60°	657.5	561.8	520.1	501.8	492.4	487.9	484.9
75°	629.9	543.7	509.7	491.6	478.6	469.0	460.3
90°	638.4	545.2	506.6	489.1	473.9	459.6	437.7
110°	651.8	540.7	498.5	475.0	454.7	440.5	422.1
120°	669.9	551.8	503.3	478.1	455.6	434.1	405.0
135°	736.6	602.0	526.8	494.3	471.5	448.7	406.0
150°	876.2	697.1	589.4	524.9	495.0	473.7	431.6
Run VMG	1011.7	804.9	680.3	597.4	541.4	505.3	462.7
Selected Courses							
Windward / Leeward	1036.4	844.6	730.6	664.2	626.9	604.7	581.8
All purpose	797.3	659.7	586.5	547.7	524.1	509.4	489.8

Single Number Scoring Options		
Course	Time On Distance	Time On Time
Windward / Leeward	696.6	0.8613
All purpose	567.7	1.0569

Custom scoring options for Estonia

Single Number	Time On Distance	Time On Time
Coastal/Long Distance	619.1	0.9692
Triple Number Coastal/Long Distance Low	728.5	0.8236
Triple Number Coastal/Long Distance Medium	564.1	1.0637
Triple Number Coastal/Long Distance High	505.7	1.1864
Triple Number Windward/Leeward Low	940.4	0.6380
Triple Number Windward/Leeward Medium	692.0	0.8670
Triple Number Windward/Leeward High	601.6	0.9973

Performance Curve	6 kt	8 kt	10 kt	12 kt	14 kt	16 kt	20 kt
Coastal/Long Distance	1033.9	793.4	659.7	583.5	545.1	515.8	469.5

Data in meters/kilograms (Metric)

HULL AND APPENDAGES

Class	GUYLINE 355	LOA	10.646	VCGD	0.128
Measurement	20/05/2011	Max. Beam	3.452	VCGM	0.081
Measurer		Draft	1.975	RM Measured (kg·m)	112.6
HIN		Displacement	5,707	RM Default (kg·m)	116.5
Plan review		Wetted area	24.90	Limit of positive stability(°)	111.3
Hull construction	Cored	IMS L	9.495	Stability Index	113.5
Carbon Rudder	Yes	LSM0	9.450		
Light stanchions		Acc. length	10.646		
Trim tab	No	Sink (kg/mm)	18.47		

PROPELLER

Propeller Type	Folding 2 blades	PRD	0.410	EDL	1.680	ST3	0.170
Installation	Strut	PBW	0.100	ST1	0.047	ST4	0.095
Twin screw	No			ST2	0.170	ST5	0.290
PIPA	0.0030						

RIG

Forestay tension	Aft	P	13.000	E	4.420
Inner stay	None Fitted	IG	13.650	J	4.360
Carbon mast	No	ISP	13.670	BAS	1.645
Headsail furler	No	MDT1	0.125	FSD	0.037
Mainsail furler	No	MDL1	0.185	SFJ	0.150
Articulated bowsprit	No	MDT2	0.121	SPL	4.030
Non-circular rigging	No	MDL2	0.143	TPS	
Fiber rigging	No	TL	1.170	BD	0.200
Runners/Checkstays	0	MW	0.178	MWT	134.50
Spreaders	2	GO	0.198	MCG	4.770

FLOTATION AND STABILITY

Inclining Test	Poles Inclining	SFFP	0.550	SAFP	9.246	W1	76.0	PD1	616.8	WD	11.570
Flotation Date	28/07/2021	FFM	1.173	FAM	0.982	W2	76.0	PD2	615.8	PLM	9000.00
Measurer		FF	1.179	FA	0.994	W3	76.0	PD3	614.0	GSA	1.0
Comment		LCFcl	5.679	LCFsh	5.915	W4	76.0	PD4	614.0	RSA	1.0
		SG	1.0000	HBI	1.030						

MEASUREMENT INVENTORY

Id	Tank Type	Capacity	LCG	VCG	Condition	Description
1	Water St. steel	80.0	5.06		0-0	
2	Fuel St. steel	70.0	8.15		35-0	
Id	Item Description	Weight	LCG	VCG		
1	Battery 2 service battery		4.40			
2	Battery Engine battery		5.40			
1	Miscellaneous Air heater		9.00			



International
Certificate
2021

Boat
FANATIC
EST-239

Offshore
Racing
Congress

Certificate number: 238/21



MAINSAIL

Id	MHB	MUW	MTW	MHW	MQW	Area	Measurer	Meas.Date	Maker	Material	Comment
3a	0.17	0.95	1.70	2.87	3.72	34.43		03/12/2014	North	Carbon	

HEADSAIL

Id	HHB	HUW	HTW	HHW	HQW	HLP	HLU	Btn	Flying	FT	Area	Measurer	Meas.Date	Maker	Material	Comment
6	0.09	0.74	1.40	2.77	4.20	5.64	13.50	No	No		37.93			North	Unknown	Light medium
7	0.08	0.69	1.27	2.31	3.32	4.37	13.76	No	No		31.28		16/10/2021	North	Unknown	

SYMMETRIC SPINNAKER

Id	SLU	SLE	SL	SHW	SFL	Area	Measurer	Meas.Date	Maker	Material	Comment
5	13.38	13.38	13.38	8.00	7.70	88.53				Unknown	Must stiga
3	13.38	13.38	13.38	7.96	7.61	87.97		08/07/2008		Unknown	Kerge
4	13.44	13.44	13.44	7.84	7.83	87.79				Unknown	S-2
1	13.35	13.35	13.35	7.88	7.73	87.33		08/07/2008		Unknown	Schüko
2	13.33	13.33	13.33	7.22	7.00	79.71		08/07/2008		Unknown	Mersu