

GPH = **745.3** CDL = **6.257**

BOAT

Class **Polaris CR**
Designer
Builder
Age Date **01/1995**
Series Date **01/1984**
Offset File **Polaris mickeymouse keel with custom build.off**

HULL

Length Overall **8.080 m**
Maximum Beam **2.706 m**
Draft **1.582 m**
Displacement **2,000 kg**
DLR **8.6971**
IMS Division **Performance**
Dynamic Allowance **0.353%**
Age Allowance **0.487%**

PROPELLER

Installation **No Propeller**
Type **N/A**
Diameter **N/A**

CREW

Maximum weight **400 kg**
Minimum weight **300 kg * when applied**
Non Manual Power **No**
Crew Arm Extension

SAIL AREAS (m²)

	Measured	Rated
Mainsail	18.05	18.49
Headsail Luffed	14.31	14.31
Headsail Flying		
Symmetric	31.22	31.22
Asymmetric		

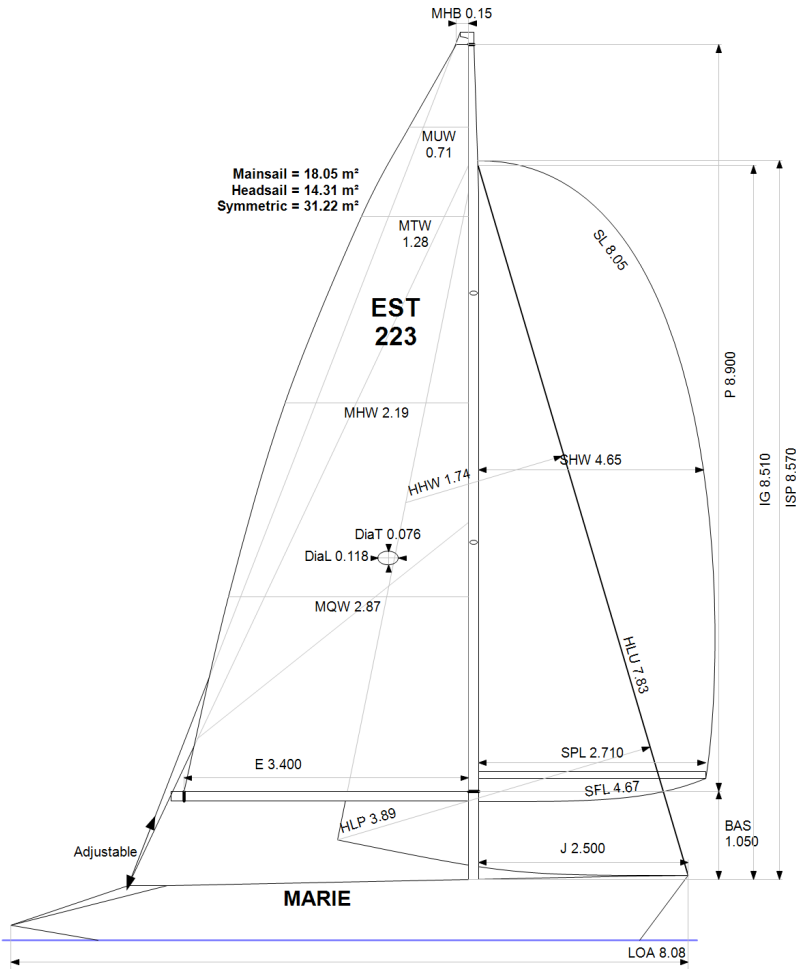
SAIL LIMITATIONS

Headsails **5**
Spinnakers **4**

STABILITY

Righting Moment **32.3 kg·m**
Stability Index **N/A**

OWNER



Rated boat velocities in knots

Wind Velocity	6 kt	8 kt	10 kt	12 kt	14 kt	16 kt	20 kt
Beat Angles	41.6°	42.0°	40.9°	38.3°	37.5°	36.8°	37.1°
Beat VMG	2.91	3.46	3.92	4.25	4.42	4.48	4.49
52°	4.40	5.22	5.69	5.93	6.09	6.17	6.23
60°	4.63	5.45	5.84	6.06	6.23	6.36	6.46
75°	4.80	5.59	5.95	6.19	6.40	6.60	6.86
90°	4.75	5.67	6.09	6.38	6.64	6.79	7.12
110°	4.73	5.66	6.10	6.44	6.78	7.09	7.57
120°	4.56	5.52	6.02	6.34	6.67	7.00	7.63
135°	4.11	5.03	5.74	6.11	6.42	6.75	7.39
150°	3.54	4.44	5.24	5.81	6.14	6.43	7.05
Run VMG	3.06	3.85	4.56	5.22	5.76	6.09	6.68
Gybe Angles	149.0°	153.0°	155.0°	172.0°	180.0°	180.0°	180.0°

The owner certifies that he/she understands his/her responsibilities under ORC Rule and Regulations.

Time Allowances in secs/NM							
Wind Velocity	6 kt	8 kt	10 kt	12 kt	14 kt	16 kt	20 kt
Beat VMG	1237.7	1040.1	919.3	847.1	815.2	803.4	802.5
52°	817.9	689.0	633.2	607.1	591.6	583.0	578.0
60°	777.0	660.1	616.9	594.4	577.8	565.7	557.0
75°	749.3	643.8	604.5	582.0	562.6	545.5	524.8
90°	758.7	635.4	591.3	564.1	542.3	530.2	505.7
110°	760.5	636.0	590.1	559.3	531.0	507.5	475.3
120°	789.0	652.3	598.5	568.2	539.7	514.1	471.8
135°	875.7	715.3	627.3	589.2	560.6	533.1	487.1
150°	1018.1	811.4	687.0	619.8	586.4	559.6	510.9
Run VMG	1175.5	934.8	789.7	689.3	624.9	590.7	539.2
Selected Courses							
Windward / Leeward	1206.6	987.4	854.5	768.2	720.0	697.1	670.9
All purpose	934.7	774.2	690.1	640.8	609.6	591.1	566.1

Single Number Scoring Options		
Course	Time On Distance	Time On Time
Windward / Leeward	807.7	0.7429
All purpose	663.7	0.9040

Custom scoring options for Estonia

Single Number	Time On Distance	Time On Time
Coastal/Long Distance	722.4	0.8306
Triple Number Coastal/Long Distance Low	854.5	0.7022
Triple Number Coastal/Long Distance Medium	660.6	0.9083
Triple Number Coastal/Long Distance High	586.4	1.0232
Triple Number Windward/Leeward Low	1097.1	0.5469
Triple Number Windward/Leeward Medium	803.2	0.7470
Triple Number Windward/Leeward High	693.0	0.8658

Performance Curve	6 kt	8 kt	10 kt	12 kt	14 kt	16 kt	20 kt
Coastal/Long Distance	1203.5	927.9	773.5	681.3	633.2	599.2	543.6

