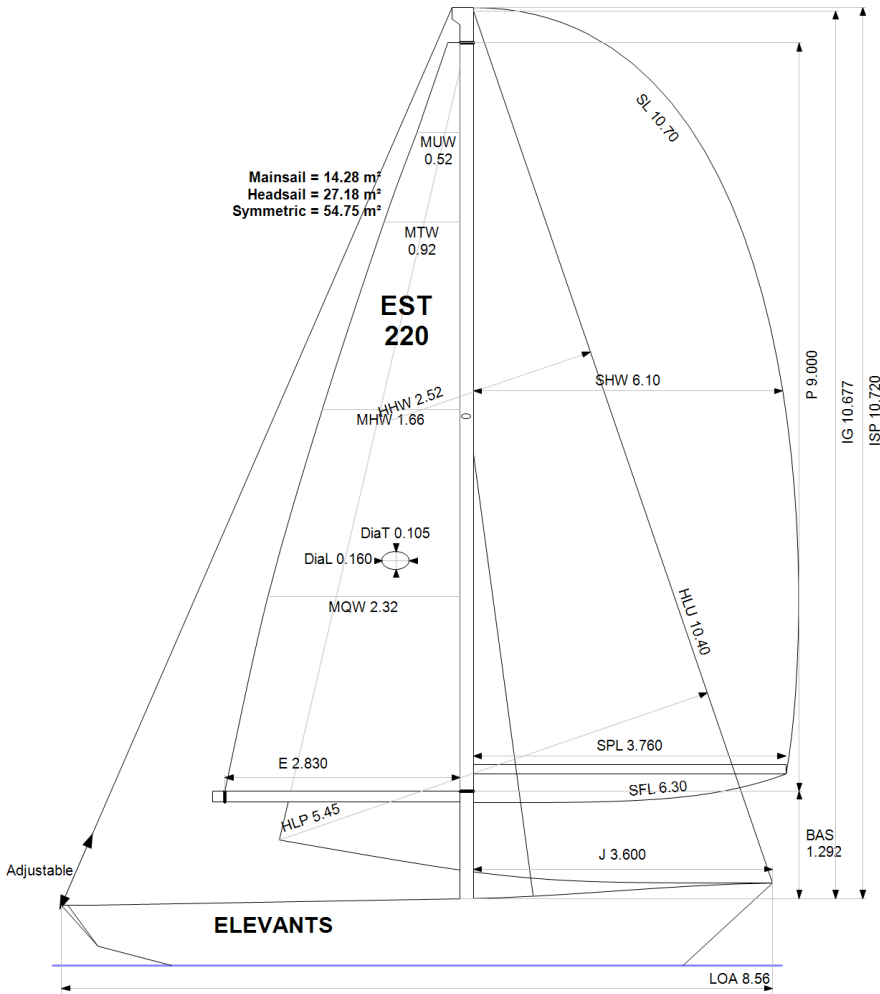


**GPH = 753.3** **CDL = 6.324**



**BOAT**

Class **COMPIS 28**  
Designer **BO ANDERSSON**  
Builder **Compisbatar**  
Age Date **01/1979**  
Series Date **01/1968**  
Offset File **e186.bof**

**HULL**

Length Overall **8.560 m**  
Maximum Beam **2.920 m**  
Draft **1.583 m**  
Displacement **3,342 kg**  
DLR **9.4901**  
IMS Division **Cruiser/Racer**  
Dynamic Allowance **0.558%**  
Age Allowance **0.487%**

**PROPELLER**

Installation **Shaft exposed**  
Type **Solid 2 blades**  
Diameter **0.300m**

**CREW**

Maximum weight **412 kg**  
Minimum weight **309 kg \* when applied**  
Non Manual Power **No**  
Crew Arm Extension

**SAIL AREAS (m²)**

	Measured	Rated
Mainsail	<b>14.28</b>	<b>14.51</b>
Headsail Luffed	<b>27.18</b>	<b>27.18</b>
Headsail Flying		
Symmetric	<b>54.75</b>	<b>54.75</b>
Asymmetric		

**SAIL LIMITATIONS**

Headsails **5**  
Spinnakers **4**

**STABILITY**

Righting Moment **38.6 kg·m**  
Stability Index **N/A**

**OWNER**

*The owner certifies that he/she understands his/her responsibilities under ORC Rule and Regulations.*

Rated boat velocities in knots							
Wind Velocity	6 kt	8 kt	10 kt	12 kt	14 kt	16 kt	20 kt
Beat Angles	42.8°	41.3°	42.0°	41.3°	40.5°	40.1°	40.5°
Beat VMG	2.83	3.35	3.75	4.05	4.19	4.25	4.26
52°	4.31	5.06	5.60	5.87	6.01	6.09	6.13
60°	4.54	5.34	5.79	6.02	6.17	6.27	6.34
75°	4.71	5.53	5.94	6.16	6.33	6.48	6.69
90°	4.65	5.53	6.04	6.29	6.42	6.56	6.90
110°	4.71	5.68	6.15	6.44	6.72	6.96	7.21
120°	4.58	5.57	6.10	6.41	6.70	7.00	7.45
135°	4.22	5.13	5.87	6.23	6.51	6.81	7.40
150°	3.65	4.54	5.33	5.92	6.24	6.50	7.06
Run VMG	3.16	3.94	4.63	5.26	5.81	6.15	6.66
Gybe Angles	148.0°	152.0°	152.0°	162.0°	180.0°	180.0°	180.0°

Time Allowances in secs/NM							
Wind Velocity	6 kt	8 kt	10 kt	12 kt	14 kt	16 kt	20 kt
Beat VMG	1270.2	1074.9	960.7	888.3	859.7	846.8	844.9
52°	834.3	711.7	643.2	613.6	598.7	591.3	587.2
60°	792.3	674.2	621.9	598.1	583.7	574.4	567.6
75°	764.5	651.2	606.5	584.6	568.9	555.9	538.0
90°	773.7	651.0	596.1	572.1	561.0	548.5	522.1
110°	764.9	634.2	585.7	559.0	536.1	517.1	499.0
120°	785.3	646.7	590.6	562.0	537.4	514.5	483.1
135°	852.6	701.5	613.8	578.2	553.0	528.6	486.6
150°	985.9	792.3	675.6	608.1	577.3	554.1	510.2
Run VMG	1138.4	913.7	777.5	683.8	619.4	585.2	540.3
Selected Courses							
Windward / Leeward	1204.3	994.3	869.1	786.0	739.5	716.0	692.6
All purpose	937.7	780.7	696.6	648.4	620.6	603.5	582.1

Single Number Scoring Options		
Course	Time On Distance	Time On Time
Windward / Leeward	823.4	0.7287
All purpose	672.3	0.8924

### Custom scoring options for Estonia

Single Number	Time On Distance	Time On Time
Coastal/Long Distance	731.9	0.8198
Triple Number Coastal/Long Distance Low	859.1	0.6984
Triple Number Coastal/Long Distance Medium	668.5	0.8975
Triple Number Coastal/Long Distance High	599.8	1.0004
Triple Number Windward/Leeward Low	1099.3	0.5458
Triple Number Windward/Leeward Medium	819.4	0.7322
Triple Number Windward/Leeward High	713.1	0.8414

Performance Curve	6 kt	8 kt	10 kt	12 kt	14 kt	16 kt	20 kt
Coastal/Long Distance	1197.7	933.6	783.6	691.5	645.3	611.0	556.6