

GPH = **589.0** CDL = **10.575**

BOAT

Class **VARIANTA 44**
Designer **JUDEL/VROLIJK**
Builder **YZ GREIFSWALD**
Age Date **04/2016**
Series Date **08/2010**
Offset File **VA44.OFF**

HULL

Length Overall **13.150 m**
Maximum Beam **4.218 m**
Draft **2.174 m**
Displacement **9,800 kg**
DLR **6.2037**
IMS Division **Cruiser/Racer**
Dynamic Allowance **0.204%**
Age Allowance **0.357%**

PROPELLER

Installation **Strut**
Type **Folding 3 blades**
Diameter **0.400m**

CREW

Maximum weight **800 kg**
Minimum weight **600 kg * when applied**
Non Manual Power **No**
Crew Arm Extension

SAIL AREAS (m²)

	Measured	Rated
Mainsail	55.90	56.81
Headsail Luffed	49.51	49.51
Headsail Flying		
Symmetric	137.76	137.76
Asymmetric	131.19	131.19

* All asymmetric spinnakers with SHW/SFL > 85%

SAIL LIMITATIONS

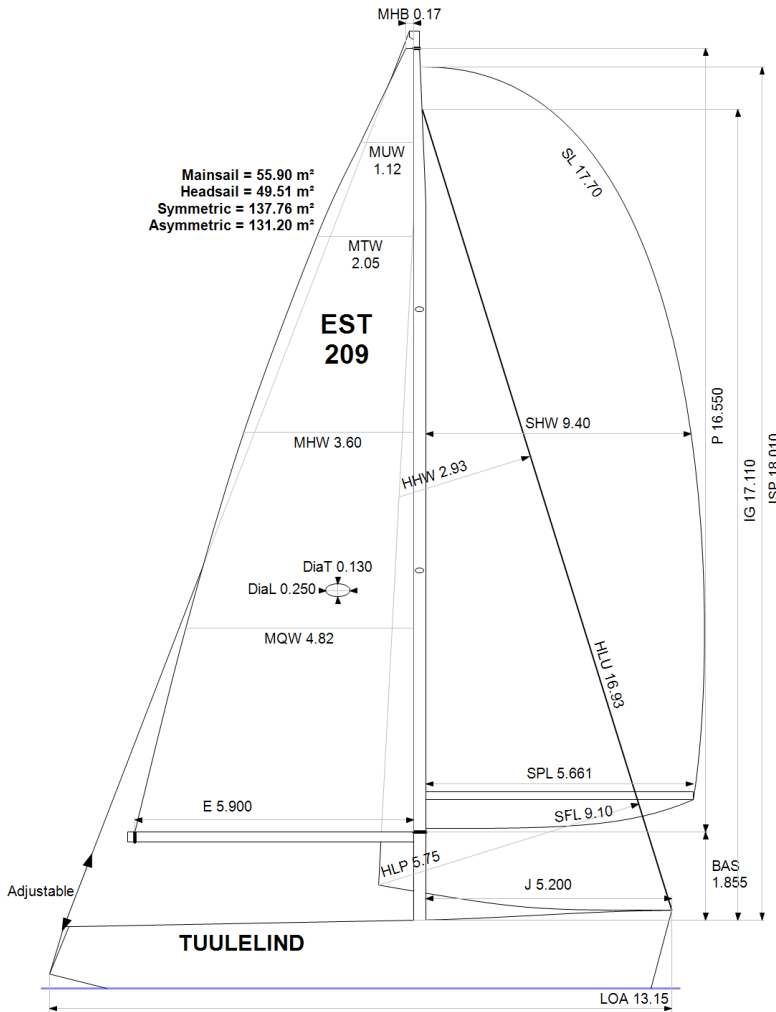
Headsails **6**
Spinnakers **4** * Asymmetric may be tacked on the pole

STABILITY

Righting Moment **295.0 kg·m**
Stability Index **N/A**

OWNER

The owner certifies that he/she understands his/her responsibilities under ORC Rule and Regulations.



Rated boat velocities in knots

Wind Velocity	6 kt	8 kt	10 kt	12 kt	14 kt	16 kt	20 kt
Beat Angles	44.3°	42.8°	42.0°	41.3°	40.5°	40.5°	41.3°
Beat VMG	3.44	4.21	4.83	5.23	5.40	5.47	5.53
52°	5.36	6.44	7.27	7.72	7.89	7.97	8.03
60°	5.74	6.82	7.57	7.96	8.15	8.23	8.28
75°	6.06	7.13	7.79	8.16	8.41	8.61	8.76
90°	6.01	7.20	7.94	8.26	8.49	8.78	9.29
110°	6.02	7.32	8.07	8.51	8.93	9.24	9.70
120°	5.85	7.14	7.96	8.44	8.90	9.39	10.15
135°	5.26	6.52	7.53	8.13	8.56	9.03	10.08
150°	4.44	5.61	6.64	7.51	8.09	8.50	9.39
Run VMG	3.84	4.86	5.75	6.56	7.22	7.82	8.66
Gybe Angles	144.5°	148.0°	150.5°	154.0°	162.0°	180.0°	180.0°

Time Allowances in secs/NM							
Wind Velocity	6 kt	8 kt	10 kt	12 kt	14 kt	16 kt	20 kt
Beat VMG	1046.2	854.2	745.0	687.9	666.8	658.3	650.7
52°	672.0	559.2	495.5	466.4	456.1	451.8	448.6
60°	627.5	528.2	475.5	452.3	441.9	437.6	435.0
75°	594.1	504.6	461.9	441.4	427.9	418.3	410.8
90°	599.3	500.2	453.2	436.0	424.1	410.0	387.7
110°	598.0	491.7	446.1	422.8	403.0	389.8	371.2
120°	615.1	504.2	452.3	426.7	404.3	383.3	354.6
135°	684.0	551.8	477.8	443.0	420.3	398.5	357.3
150°	811.7	642.1	541.9	479.1	444.9	423.3	383.4
Run VMG	937.2	741.5	625.7	549.0	498.8	460.1	415.7
Selected Courses							
Windward / Leeward	991.7	797.8	685.4	618.4	582.8	559.2	533.2
All purpose	756.8	617.4	541.3	500.5	478.1	461.8	441.4

Single Number Scoring Options		
Course	Time On Distance	Time On Time
Windward / Leeward	651.1	0.9215
All purpose	521.9	1.1497

Custom scoring options for Estonia

Single Number	Time On Distance	Time On Time
Coastal/Long Distance	571.5	1.0499
Triple Number Coastal/Long Distance Low	687.0	0.8733
Triple Number Coastal/Long Distance Medium	518.3	1.1577
Triple Number Coastal/Long Distance High	458.2	1.3094
Triple Number Windward/Leeward Low	894.7	0.6706
Triple Number Windward/Leeward Medium	646.8	0.9277
Triple Number Windward/Leeward High	555.3	1.0804

Performance Curve	6 kt	8 kt	10 kt	12 kt	14 kt	16 kt	20 kt
Coastal/Long Distance	986.3	747.0	613.8	536.0	496.9	466.8	419.9