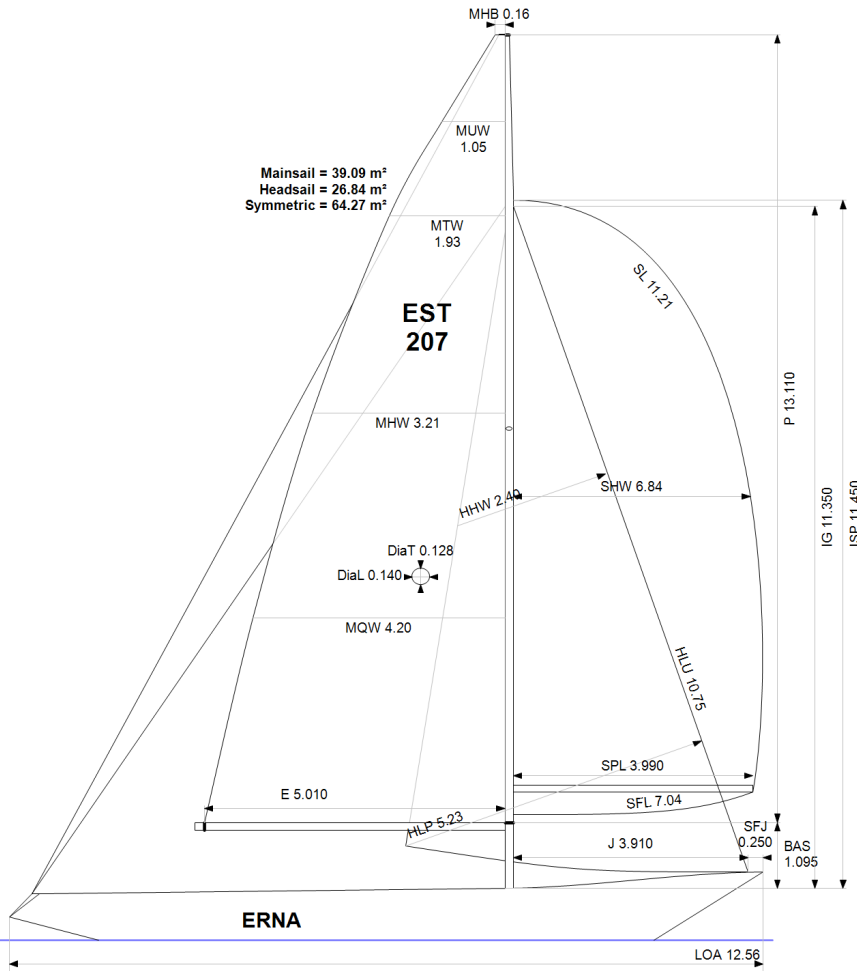


GPH = **679.7** CDL = **8.183**



BOAT

Class **L6**
Designer
Builder **VSPS**
Age Date **01/1966**
Series Date **01/1963**
Offset File **L6_UKR.off**

HULL

Length Overall **12.560 m**
Maximum Beam **2.772 m**
Draft **1.851 m**
Displacement **7,242 kg**
DLR **11.5506**
IMS Division **Cruiser/Racer**
Dynamic Allowance **0.577%**
Age Allowance **0.487%**

PROPELLER

Installation **Shaft exposed**
Type **Folding 2 blades**
Diameter **0.408m**

CREW

Maximum weight **480 kg**
Minimum weight **360 kg** * when applied
Non Manual Power **No**
Crew Arm Extension

SAIL AREAS (m²)

	Measured	Rated
Mainsail	39.09	40.05
Headsail Luffed	26.84	26.84
Headsail Flying		
Symmetric	64.27	64.27
Asymmetric		

SAIL LIMITATIONS

Headsails **5**
Spinnakers **4**

STABILITY

Righting Moment **93.8 kg·m**
Stability Index **N/A**

OWNER

The owner certifies that he/she understands his/her responsibilities under ORC Rule and Regulations.

Rated boat velocities in knots							
Wind Velocity	6 kt	8 kt	10 kt	12 kt	14 kt	16 kt	20 kt
Beat Angles	43.5°	40.9°	41.3°	42.0°	41.3°	40.9°	40.1°
Beat VMG	3.08	3.73	4.22	4.56	4.74	4.84	4.91
52°	4.72	5.58	6.34	6.76	6.94	7.03	7.11
60°	4.99	5.89	6.61	6.97	7.16	7.25	7.33
75°	5.20	6.15	6.80	7.14	7.35	7.51	7.66
90°	5.15	6.21	6.94	7.27	7.42	7.62	7.96
110°	5.14	6.25	6.99	7.37	7.67	7.91	8.18
120°	4.96	6.04	6.87	7.29	7.59	7.89	8.43
135°	4.45	5.42	6.39	7.00	7.35	7.65	8.28
150°	3.73	4.74	5.62	6.46	7.00	7.34	7.91
Run VMG	3.23	4.11	4.87	5.63	6.31	6.88	7.53
Gybe Angles	147.0°	152.0°	153.5°	155.0°	172.0°	180.0°	180.0°

Time Allowances in secs/NM							
Wind Velocity	6 kt	8 kt	10 kt	12 kt	14 kt	16 kt	20 kt
Beat VMG	1168.2	965.1	853.7	789.6	760.1	744.3	733.1
52°	763.3	644.6	568.1	532.9	518.6	511.9	506.2
60°	721.9	611.4	544.6	516.4	502.6	496.3	490.8
75°	692.1	585.6	529.1	504.2	489.5	479.5	470.0
90°	699.1	579.7	518.4	495.4	485.3	472.2	452.3
110°	700.6	575.8	514.9	488.3	469.6	455.1	440.1
120°	726.0	596.0	524.1	493.9	474.2	456.4	426.9
135°	809.6	664.1	563.8	514.3	489.6	470.5	434.8
150°	964.2	759.3	641.1	557.6	514.0	490.4	454.9
Run VMG	1113.3	875.9	739.1	639.7	570.4	523.3	478.4
Selected Courses							
Windward / Leeward	1140.8	920.5	796.4	714.6	665.2	633.8	605.7
All purpose	874.6	716.5	626.7	576.3	548.7	529.6	509.3

Single Number Scoring Options		
Course	Time On Distance	Time On Time
Windward / Leeward	749.5	0.8006
All purpose	601.8	0.9971

Custom scoring options for Estonia

Single Number	Time On Distance	Time On Time
Coastal/Long Distance	658.7	0.9108
Triple Number Coastal/Long Distance Low	795.5	0.7542
Triple Number Coastal/Long Distance Medium	597.8	1.0036
Triple Number Coastal/Long Distance High	526.8	1.1390
Triple Number Windward/Leeward Low	1030.6	0.5822
Triple Number Windward/Leeward Medium	746.7	0.8035
Triple Number Windward/Leeward High	631.1	0.9507

Performance Curve	6 kt	8 kt	10 kt	12 kt	14 kt	16 kt	20 kt
Coastal/Long Distance	1138.0	863.7	711.9	617.5	570.0	536.1	486.5

