

**GPH = 695.8**    **CDL = 7.192**

**BOAT**

Class **FINNFLYER 31 LF**  
Designer **EIVIND STILL**  
Builder **POLAR YACHT**  
Age Date **01/1983**  
Series Date **01/1983**  
Offset File **FF31LF.OFF**

**HULL**

Length Overall **9.380 m**  
Maximum Beam **3.240 m**  
Draft **1.750 m**  
Displacement **2,986 kg**  
DLR **7.5888**  
IMS Division  
Dynamic Allowance **0.213%**  
Age Allowance **0.487%**

**PROPELLER**

Installation **Shaft exposed**  
Type **Folding 2 blades**  
Diameter **0.380m**

**CREW**

Maximum weight **480 kg**  
Minimum weight **360 kg \* when applied**  
Non Manual Power **No**  
Crew Arm Extension

**SAIL AREAS (m<sup>2</sup>)**

|                 | Measured     | Rated        |
|-----------------|--------------|--------------|
| Mainsail        | <b>26.18</b> | <b>26.73</b> |
| Headsail Luffed | <b>19.42</b> | <b>19.42</b> |
| Headsail Flying |              |              |
| Symmetric       | <b>48.70</b> | <b>48.70</b> |
| Asymmetric      |              |              |

**SAIL LIMITATIONS**

Headsails **5** \* Woven polyester sails  
Spinnakers **4**

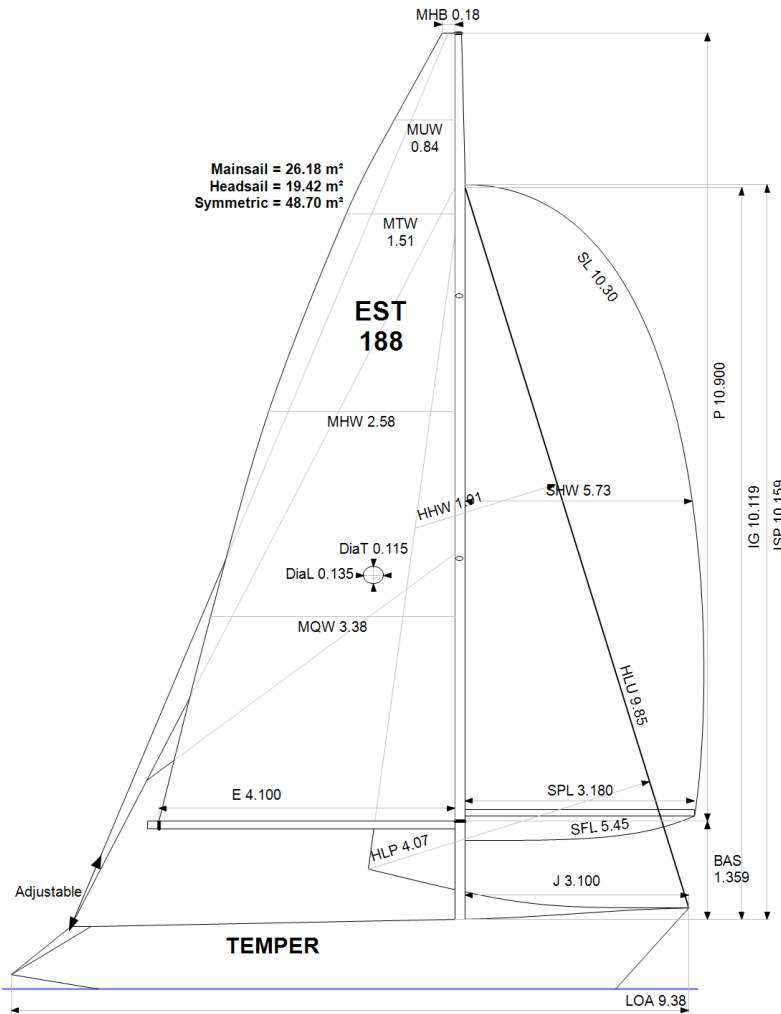
**STABILITY**

Righting Moment **57.6 kg·m**  
Stability Index **N/A**

**COMMENTS**

EX FIN-3133 TEMPTATION

**OWNER**



| Rated boat velocities in knots |        |        |        |        |        |        |        |
|--------------------------------|--------|--------|--------|--------|--------|--------|--------|
| Wind Velocity                  | 6 kt   | 8 kt   | 10 kt  | 12 kt  | 14 kt  | 16 kt  | 20 kt  |
| Beat Angles                    | 42.8°  | 42.0°  | 41.3°  | 39.2°  | 38.6°  | 38.4°  | 39.4°  |
| Beat VMG                       | 3.06   | 3.68   | 4.17   | 4.51   | 4.65   | 4.71   | 4.68   |
| 52°                            | 4.69   | 5.57   | 6.11   | 6.39   | 6.53   | 6.60   | 6.63   |
| 60°                            | 4.96   | 5.84   | 6.29   | 6.54   | 6.71   | 6.82   | 6.89   |
| 75°                            | 5.16   | 6.04   | 6.43   | 6.69   | 6.92   | 7.11   | 7.33   |
| 90°                            | 5.12   | 6.11   | 6.57   | 6.88   | 7.10   | 7.24   | 7.66   |
| 110°                           | 5.12   | 6.13   | 6.62   | 6.99   | 7.36   | 7.69   | 8.10   |
| 120°                           | 4.93   | 5.98   | 6.53   | 6.90   | 7.28   | 7.65   | 8.34   |
| 135°                           | 4.43   | 5.44   | 6.23   | 6.64   | 6.99   | 7.36   | 8.11   |
| 150°                           | 3.75   | 4.73   | 5.61   | 6.28   | 6.65   | 6.98   | 7.68   |
| Run VMG                        | 3.25   | 4.10   | 4.87   | 5.58   | 6.18   | 6.57   | 7.23   |
| Gybe Angles                    | 147.0° | 151.0° | 153.0° | 164.0° | 180.0° | 180.0° | 180.0° |

The owner certifies that he/she understands his/her responsibilities under ORC Rule and Regulations.

| Time Allowances in secs/NM |        |       |       |       |       |       |       |
|----------------------------|--------|-------|-------|-------|-------|-------|-------|
| Wind Velocity              | 6 kt   | 8 kt  | 10 kt | 12 kt | 14 kt | 16 kt | 20 kt |
| Beat VMG                   | 1175.5 | 977.0 | 862.4 | 798.0 | 773.9 | 764.8 | 769.3 |
| 52°                        | 768.0  | 646.6 | 589.1 | 563.6 | 551.0 | 545.3 | 542.6 |
| 60°                        | 726.2  | 616.2 | 572.2 | 550.5 | 536.6 | 528.1 | 522.6 |
| 75°                        | 697.6  | 596.5 | 559.5 | 538.3 | 520.6 | 506.1 | 490.9 |
| 90°                        | 702.6  | 589.6 | 547.7 | 523.2 | 507.0 | 496.9 | 470.3 |
| 110°                       | 703.6  | 587.0 | 544.0 | 515.3 | 489.1 | 468.3 | 444.7 |
| 120°                       | 729.7  | 602.4 | 551.5 | 522.1 | 494.7 | 470.7 | 431.9 |
| 135°                       | 812.1  | 662.2 | 578.2 | 542.4 | 515.1 | 488.9 | 444.0 |
| 150°                       | 960.8  | 760.4 | 642.1 | 573.5 | 541.3 | 515.6 | 469.0 |
| Run VMG                    | 1109.4 | 877.8 | 738.8 | 645.3 | 582.1 | 547.6 | 498.2 |
| Selected Courses           |        |       |       |       |       |       |       |
| Windward / Leeward         | 1142.4 | 927.4 | 800.6 | 721.7 | 678.0 | 656.2 | 633.7 |
| All purpose                | 877.6  | 723.0 | 642.6 | 596.4 | 568.7 | 552.0 | 530.3 |

| Single Number Scoring Options |                  |              |
|-------------------------------|------------------|--------------|
| Course                        | Time On Distance | Time On Time |
| Windward / Leeward            | 759.4            | 0.7901       |
| All purpose                   | 619.1            | 0.9692       |

### Custom scoring options for Estonia

| Single Number                              | Time On Distance | Time On Time |
|--|------------------|--------------|
| Coastal/Long Distance                      | 675.2            | 0.8887       |
| Triple Number Coastal/Long Distance Low    | 800.3            | 0.7497       |
| Triple Number Coastal/Long Distance Medium | 615.4            | 0.9750       |
| Triple Number Coastal/Long Distance High   | 548.0            | 1.0948       |
| Triple Number Windward/Leeward Low         | 1034.8           | 0.5798       |
| Triple Number Windward/Leeward Medium      | 754.2            | 0.7955       |
| Triple Number Windward/Leeward High        | 653.2            | 0.9185       |

| Performance Curve     | 6 kt   | 8 kt  | 10 kt | 12 kt | 14 kt | 16 kt | 20 kt |
|-----------------------|--------|-------|-------|-------|-------|-------|-------|
| Coastal/Long Distance | 1139.1 | 870.4 | 722.7 | 635.4 | 591.3 | 559.4 | 506.3 |