

GPH = **733.7** CDL = **6.321**

**BOAT**

Class **Conrad 25R**  
Designer **Pettersen**  
Builder **Teliga**  
Age Date **01/1982**  
Series Date **01/1978**  
Offset File **EST185CL.off**

**HULL**

Length Overall **7.650 m**  
Maximum Beam **2.756 m**  
Draft **1.719 m**  
Displacement **1,703 kg**  
DLR **7.2902**  
IMS Division **Performance**  
Dynamic Allowance **0.120%**  
Age Allowance **0.487%**

**PROPELLER**

Installation **No Propeller**  
Type **N/A**  
Diameter **N/A**

**CREW**

Maximum weight **400 kg**  
Minimum weight **300 kg \* when applied**  
Non Manual Power **No**  
Crew Arm Extension

**SAIL AREAS (m<sup>2</sup>)**

	Measured	Rated
Mainsail	<b>17.69</b>	<b>18.06</b>
Headsail Luffed	<b>15.80</b>	<b>15.80</b>
Headsail Flying		
Symmetric	<b>36.30</b>	<b>36.30</b>
Asymmetric		

**SAIL LIMITATIONS**

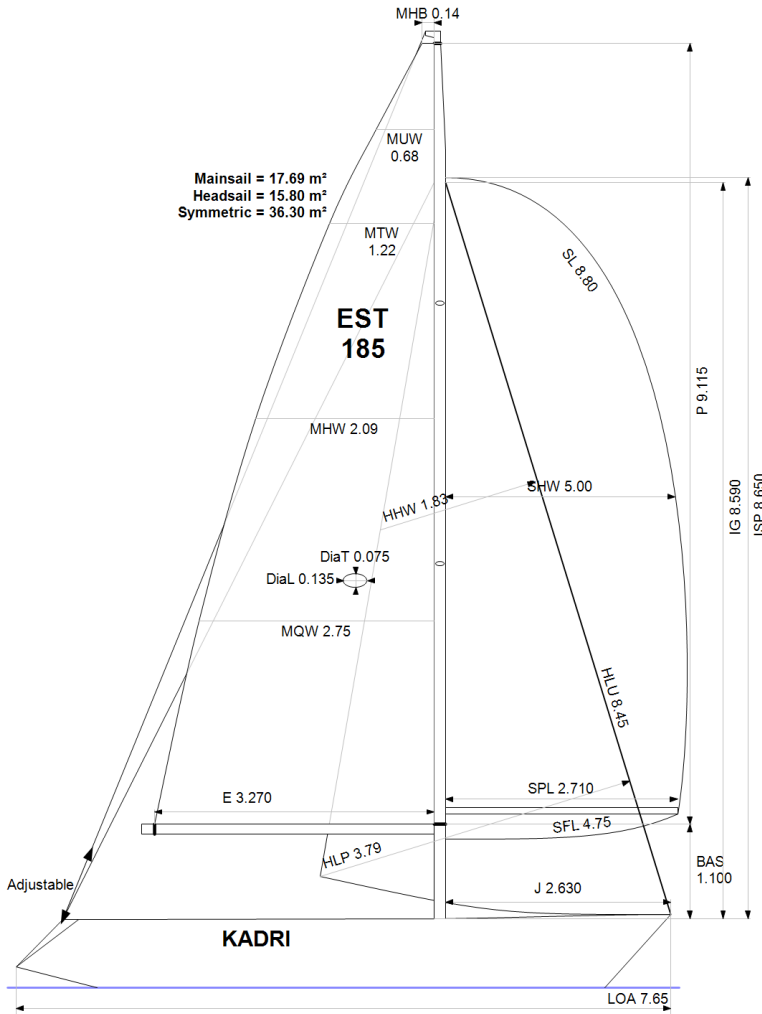
Headsails **5**  
Spinnakers **4**

**STABILITY**

Righting Moment **28.6 kg·m**  
Stability Index **N/A**

**OWNER**

*The owner certifies that he/she understands his/her responsibilities under ORC Rule and Regulations.*



Rated boat velocities in knots

Wind Velocity	6 kt	8 kt	10 kt	12 kt	14 kt	16 kt	20 kt
Beat Angles	40.5°	41.3°	39.0°	37.1°	36.8°	36.8°	37.9°
Beat VMG	3.05	3.61	4.06	4.32	4.40	4.43	4.37
52°	4.56	5.35	5.72	5.93	6.05	6.10	6.11
60°	4.78	5.53	5.84	6.05	6.21	6.30	6.35
75°	4.93	5.63	5.95	6.19	6.41	6.59	6.76
90°	4.86	5.70	6.09	6.39	6.60	6.73	7.10
110°	4.86	5.71	6.12	6.49	6.85	7.16	7.53
120°	4.69	5.60	6.04	6.40	6.77	7.13	7.78
135°	4.24	5.16	5.80	6.15	6.50	6.86	7.60
150°	3.63	4.53	5.32	5.85	6.18	6.51	7.17
Run VMG	3.14	3.93	4.65	5.32	5.80	6.12	6.75
Gybe Angles	149.0°	153.0°	154.5°	174.0°	180.0°	180.0°	180.0°

Time Allowances in secs/NM							
Wind Velocity	6 kt	8 kt	10 kt	12 kt	14 kt	16 kt	20 kt
Beat VMG	1180.2	996.4	887.3	833.8	817.7	812.5	824.1
52°	790.2	673.4	629.2	607.5	595.5	590.4	589.1
60°	753.9	651.5	616.0	594.7	579.5	571.4	567.1
75°	729.9	639.8	605.3	582.0	561.6	546.1	532.4
90°	740.2	631.3	591.2	563.4	545.8	534.8	506.7
110°	740.1	630.4	588.0	554.7	525.7	503.1	478.0
120°	766.8	643.4	596.5	562.9	531.7	504.7	462.5
135°	849.7	697.7	620.8	585.0	553.6	524.6	473.8
150°	991.5	794.4	676.4	615.0	582.6	553.3	501.8
Run VMG	1144.9	916.2	774.1	677.1	620.6	587.9	533.1
Selected Courses							
Windward / Leeward	1162.5	956.3	830.7	755.4	719.2	700.2	678.6
All purpose	903.8	755.8	679.1	635.1	608.7	591.9	569.9

Single Number Scoring Options		
Course	Time On Distance	Time On Time
Windward / Leeward	794.3	0.7554
All purpose	656.6	0.9139

### Custom scoring options for Estonia

Single Number	Time On Distance	Time On Time
Coastal/Long Distance	712.2	0.8425
Triple Number Coastal/Long Distance Low	829.8	0.7231
Triple Number Coastal/Long Distance Medium	653.2	0.9185
Triple Number Coastal/Long Distance High	587.8	1.0207
Triple Number Windward/Leeward Low	1059.5	0.5663
Triple Number Windward/Leeward Medium	788.2	0.7612
Triple Number Windward/Leeward High	696.9	0.8610

Performance Curve	6 kt	8 kt	10 kt	12 kt	14 kt	16 kt	20 kt
Coastal/Long Distance	1160.8	901.1	756.7	673.9	632.1	599.7	544.6