

GPH = 650.9 CDL = 8.469

BOAT

Class **First 34.7**
Designer **Benetau**
Builder **Farr**
Age Date **01/2008**
Series Date **10/2005**
Offset File **FIRST347.off**

HULL

Length Overall **9.990 m**
Maximum Beam **3.372 m**
Draft **2.006 m**
Displacement **4,710 kg**
DLR **6.4684**
IMS Division **Cruiser/Racer**
Dynamic Allowance **0.230%**
Age Allowance **0.487%**

PROPELLER

Installation **Strut**
Type **Folding 2 blades**
Diameter **0.410m**

CREW

Maximum weight **540 kg**
Minimum weight **405 kg * when applied**
Non Manual Power **No**
Crew Arm Extension

SAIL AREAS (m²)

	Measured	Rated
Mainsail	33.67	34.34
Headsail Luffed	26.08	26.08
Headsail Flying		
Symmetric	71.05	71.05
Asymmetric		

SAIL LIMITATIONS

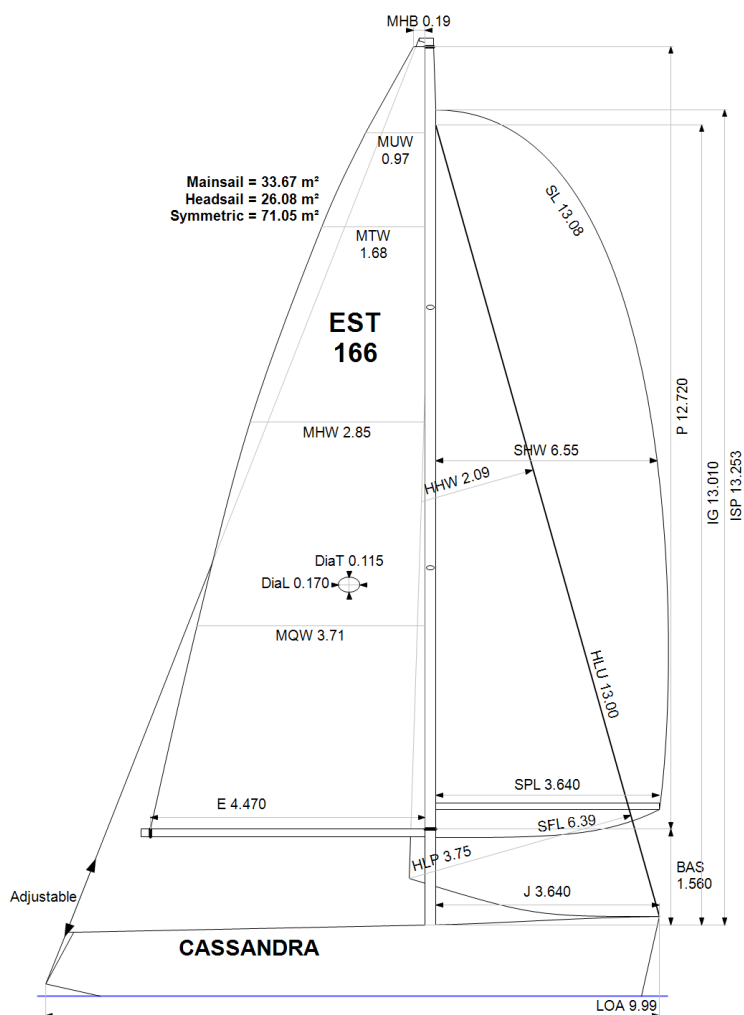
Headsails **5**
Spinnakers **4**

STABILITY

Righting Moment **100.8 kg·m**
Stability Index **125.4**

OWNER

The owner certifies that he/she understands his/her responsibilities under ORC Rule and Regulations.



Rated boat velocities in knots

Wind Velocity	6 kt	8 kt	10 kt	12 kt	14 kt	16 kt	20 kt
Beat Angles	42.8°	41.3°	40.9°	39.8°	39.4°	39.4°	40.1°
Beat VMG	3.26	3.92	4.45	4.77	4.87	4.91	4.95
52°	5.00	5.90	6.54	6.85	6.97	7.02	7.06
60°	5.29	6.21	6.75	7.03	7.17	7.23	7.26
75°	5.53	6.44	6.91	7.19	7.40	7.56	7.70
90°	5.47	6.50	7.05	7.31	7.49	7.74	8.17
110°	5.48	6.59	7.14	7.51	7.88	8.16	8.53
120°	5.31	6.44	7.06	7.44	7.83	8.25	8.93
135°	4.79	5.89	6.72	7.18	7.54	7.94	8.83
150°	4.06	5.11	6.03	6.76	7.17	7.51	8.28
Run VMG	3.52	4.43	5.23	5.95	6.59	7.05	7.73
Gybe Angles	145.5°	150.0°	152.0°	158.0°	180.0°	180.0°	180.0°



International
Certificate
2021

Boat
Cassandra
EST 166

Offshore
Racing
Congress

Certificate number: 209/21



Time Allowances in secs/NM							
Wind Velocity	6 kt	8 kt	10 kt	12 kt	14 kt	16 kt	20 kt
Beat VMG	1104.1	917.9	809.7	755.3	738.6	733.8	726.9
52°	720.6	609.9	550.1	525.5	516.3	512.8	509.6
60°	680.5	580.0	533.2	512.3	501.9	497.7	495.8
75°	651.1	558.8	520.9	501.0	486.6	476.1	467.8
90°	658.6	553.8	510.5	492.5	480.8	464.9	440.7
110°	656.9	546.2	504.4	479.4	456.6	441.0	421.9
120°	678.1	558.8	510.1	483.8	459.5	436.3	403.1
135°	750.8	611.7	535.3	501.6	477.5	453.2	407.6
150°	886.7	704.2	596.7	532.7	501.9	479.2	434.5
Run VMG	1023.9	813.2	687.7	605.0	546.6	510.8	466.0
Selected Courses							
Windward / Leeward	1064.0	865.5	748.7	680.2	642.6	622.3	596.4
All purpose	818.3	675.2	599.2	558.6	534.8	520.1	498.3

Single Number Scoring Options		
Course	Time On Distance	Time On Time
Windward / Leeward	714.1	0.8402
All purpose	579.7	1.0349

Custom scoring options for Estonia

Single Number	Time On Distance	Time On Time
Coastal/Long Distance	632.6	0.9485
Triple Number Coastal/Long Distance Low	746.7	0.8035
Triple Number Coastal/Long Distance Medium	575.9	1.0418
Triple Number Coastal/Long Distance High	515.6	1.1636
Triple Number Windward/Leeward Low	964.8	0.6219
Triple Number Windward/Leeward Medium	709.1	0.8462
Triple Number Windward/Leeward High	617.7	0.9714

Performance Curve	6 kt	8 kt	10 kt	12 kt	14 kt	16 kt	20 kt
Coastal/Long Distance	1060.0	812.3	674.8	595.9	556.6	526.2	475.6



International
Certificate
2021

Boat
Cassandra
EST 166

Offshore
Racing
Congress

Certificate number: 209/21



Data in meters/kilograms (Metric)

HULL AND APPENDAGES

Class	First 34.7	LOA	9.990	VCGD	-0.060
Measurement	05/05/2019	Max. Beam	3.372	VCGM	-0.052
Measurer		Draft	2.006	RM Measured (kg·m)	100.8
HIN		Displacement	4,710	RM Default (kg·m)	99.7
Plan review		Wetted area	22.28	Limit of positive stability(°)	125.5
Hull construction	Solid	IMS L	9.132	Stability Index	125.4
Carbon Rudder	No	LSM0	8.996		
Light stanchions	No	Acc. length	9.990		
Trim tab	No	Sink (kg/mm)	16.55		

PROPELLER

Propeller Type	Folding 2 blades	PRD	0.410	EDL	1.800	ST3	0.182
Installation	Strut	PBW		ST1	0.035	ST4	0.100
Twin screw	No			ST2	0.182	ST5	0.280
PIPA	0.0030						

RIG

Forestay tension	Aft	P	12.720	E	4.470
Inner stay	None Fitted	IG	13.010	J	3.640
Carbon mast	No	ISP	13.253	BAS	1.560
Headsail furler	No	MDT1	0.115	FSD	0.033
Mainsail furler	No	MDL1	0.170	SFJ	
Articulated bowsprit	No	MDT2	0.115	SPL	3.640
Non-circular rigging	No	MDL2	0.138	TPS	
Fiber rigging	No	TL	1.000	BD	0.130
Runners/Checkstays	0	MW	0.170	MWT	126.50
Spreaders	2	GO	0.190	MCG	4.667

FLOTATION AND STABILITY

Inclining Test	Poles Inclining	SFFP	0.172	SAFP	9.530	W1	60.2	PD1	512.5	WD	10.760
Flotation Date	05/05/2019	FFM	1.286	FAM	1.026	W2	60.2	PD2	518.7	PLM	9000.00
Measurer		FF	1.288	FA	1.041	W3	60.2	PD3	493.8	GSA	1.0
Comment		LCFcl	5.381	LCFsh	5.619	W4	60.2	PD4	500.8	RSA	1.0
		SG	1.0050	HBI	1.155						

MEASUREMENT INVENTORY

Id	Tank	Type	Capacity	LCG	VCG	Condition	Description
1	Water	PVC	80.0	4.06		0-0	
2	Fuel	PVC	75.0	7.51		20-0	
3	Septic	PVC	80.0	2.75		0-0	
Id	Item	Description	Weight	LCG	VCG		
SaS	Tools (d)	Sailor Services	36-0	7.51	0.00		
1	Battery	70 Ah		3.25			
2	Battery	70 Ah		3.70			
3	Battery	70 Ah		3.91			
1	Miscellaneous	Boiler		7.22			
2	Miscellaneous	Webasto	10.0	8.00			



International
Certificate
2021

Boat
Cassandra
EST 166

Offshore
Racing
Congress

Certificate number: 209/21



MAINSAIL

Id	MHB	MUW	MTW	MHW	MQW	Area	Measurer	Meas.Date	Maker	Material	Comment
52	0.19	0.97	1.68	2.85	3.71	33.67		15/10/2018	NS	Unknown	

HEADSAIL

Id	HHB	HUW	HTW	HHW	HQW	HLP	HLU	Btn	Flying	FT	Area	Measurer	Meas.Date	Maker	Material	Comment
12	0.12	0.59	1.11	2.09	2.96	3.75	13.00	No	No		26.08		16/01/2018	NS	Unknown	must
11	0.11	0.59	1.09	2.02	2.90	3.71	12.90	No	No		25.37		08/07/2015	NS	Unknown	hall

SYMMETRIC SPINNAKER

Id	SLU	SLE	SL	SHW	SFL	Area	Measurer	Meas.Date	Maker	Material	Comment
1	13.08	13.08	13.08	6.55	6.39	71.05		27/06/2015	NS	Nylon	
2	13.01	13.01	13.01	6.51	6.41	70.36		26/04/2017	NS	Nylon	
3	12.94	12.94	12.94	6.58	6.15	70.03		26/04/2017	NS	Nylon	