

**GPH = 714.3**    **CDL = 6.410**

**BOAT**

Class **POLARIS**  
Designer **SET**  
Builder **SET**  
Age Date **01/1991**  
Series Date **06/1984**  
Offset File **Polari17.off**

**HULL**

Length Overall **7.620 m**  
Maximum Beam **2.692 m**  
Draft **1.726 m**  
Displacement **1,675 kg**  
DLR **8.7380**  
IMS Division **Performance**  
Dynamic Allowance **0.007%**  
Age Allowance **0.487%**

**PROPELLER**

Installation **No Propeller**  
Type **N/A**  
Diameter **N/A**

**CREW**

Maximum weight **390 kg**  
Minimum weight **293 kg \* when applied**  
Non Manual Power **No**  
Crew Arm Extension

**SAIL AREAS (m<sup>2</sup>)**

	Measured	Rated
Mainsail	<b>20.32</b>	<b>20.87</b>
Headsail Luffed	<b>15.42</b>	<b>15.42</b>
Headsail Flying		
Symmetric	<b>33.01</b>	<b>33.01</b>
Asymmetric		

**SAIL LIMITATIONS**

Headsails **5**  
Spinnakers **4**

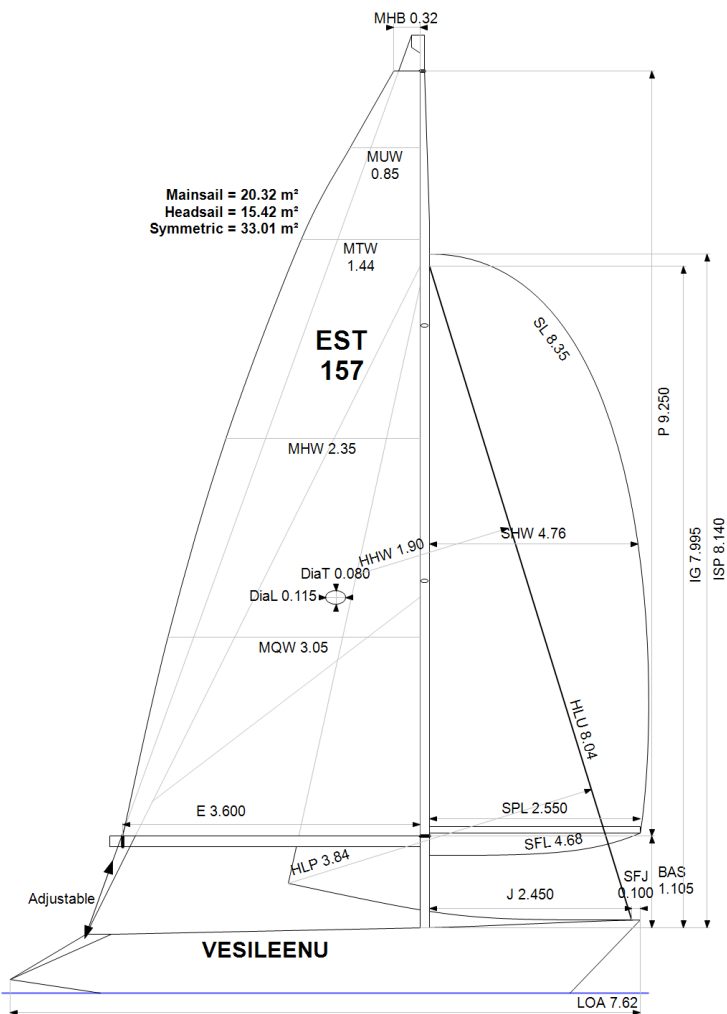
**STABILITY**

Righting Moment **31.7 kg·m**  
Stability Index **N/A**

**COMMENTS**

Jahi kaal deklareeritud 02.06.2020

**OWNER**



Rated boat velocities in knots

Wind Velocity	6 kt	8 kt	10 kt	12 kt	14 kt	16 kt	20 kt
Beat Angles	41.3°	40.5°	38.3°	37.1°	36.6°	36.6°	37.5°
Beat VMG	3.18	3.78	4.22	4.43	4.49	4.52	4.47
52°	4.80	5.55	5.88	6.07	6.16	6.22	6.24
60°	5.04	5.71	6.00	6.21	6.35	6.43	6.48
75°	5.22	5.81	6.11	6.36	6.59	6.76	6.90
90°	5.16	5.84	6.22	6.54	6.77	6.95	7.30
110°	5.02	5.83	6.23	6.62	6.98	7.31	7.76
120°	4.83	5.71	6.14	6.51	6.89	7.25	8.01
135°	4.33	5.26	5.89	6.25	6.61	6.97	7.70
150°	3.67	4.61	5.43	5.95	6.28	6.62	7.29
Run VMG	3.18	4.00	4.73	5.42	5.90	6.23	6.88
Gybe Angles	148.0°	152.5°	155.0°	180.0°	180.0°	180.0°	180.0°

The owner certifies that he/she understands his/her responsibilities under ORC Rule and Regulations.

Time Allowances in secs/NM							
Wind Velocity	6 kt	8 kt	10 kt	12 kt	14 kt	16 kt	20 kt
Beat VMG	1130.7	952.0	853.4	813.5	801.4	797.0	805.5
52°	750.1	649.1	611.8	593.0	584.0	579.2	577.3
60°	713.6	630.9	599.9	579.8	566.7	560.0	555.3
75°	690.2	619.3	589.5	565.7	545.9	532.7	522.1
90°	697.4	616.2	578.6	550.0	531.7	518.1	493.5
110°	717.2	617.6	577.5	544.0	515.8	492.3	463.6
120°	745.5	630.7	586.6	552.9	522.7	496.6	449.6
135°	831.8	684.0	610.9	576.0	544.5	516.6	467.4
150°	980.9	780.9	662.7	605.5	573.4	543.8	494.1
Run VMG	1132.6	901.1	760.7	664.5	610.0	577.8	523.3
Selected Courses							
Windward / Leeward	1131.6	926.5	807.1	739.0	705.7	687.4	664.4
All purpose	872.8	733.7	661.8	619.6	596.6	580.1	557.8

Single Number Scoring Options		
Course	Time On Distance	Time On Time
Windward / Leeward	775.4	0.7737
All purpose	640.5	0.9368

### Custom scoring options for Estonia

Single Number	Time On Distance	Time On Time
Coastal/Long Distance	695.2	0.8630
Triple Number Coastal/Long Distance Low	803.3	0.7469
Triple Number Coastal/Long Distance Medium	637.4	0.9413
Triple Number Coastal/Long Distance High	575.9	1.0419
Triple Number Windward/Leeward Low	1029.2	0.5830
Triple Number Windward/Leeward Medium	769.0	0.7802
Triple Number Windward/Leeward High	683.4	0.8780

Performance Curve	6 kt	8 kt	10 kt	12 kt	14 kt	16 kt	20 kt
Coastal/Long Distance	1131.7	874.2	736.2	659.5	619.7	587.8	532.2