

GPH = **687.1** CDL = **7.935**

**BOAT**

Class **BAVARIA34 AC**  
Designer  
Builder  
Age Date **01/2001**  
Series Date **01/1999**  
Offset File **BAVA34.OFF**

**HULL**

Length Overall **10.350 m**  
Maximum Beam **3.514 m**  
Draft **1.836 m**  
Displacement **5,357 kg**  
DLR **6.8631**  
IMS Division **Cruiser/Racer**  
Dynamic Allowance **0.393%**  
Age Allowance **0.487%**

**PROPELLER**

Installation **Strut**  
Type **Folding 2 blades**  
Diameter **0.380m**

**CREW**

Maximum weight **850 kg**  
Minimum weight **638 kg \* when applied**  
Non Manual Power **No**  
Crew Arm Extension

**SAIL AREAS (m<sup>2</sup>)**

	Measured	Rated
Mainsail	<b>26.36</b>	<b>26.80</b>
Headsail Luffed	<b>27.19</b>	<b>27.19</b>
Headsail Flying		
Symmetric	<b>74.48</b>	<b>74.48</b>
Asymmetric		

**SAIL LIMITATIONS**

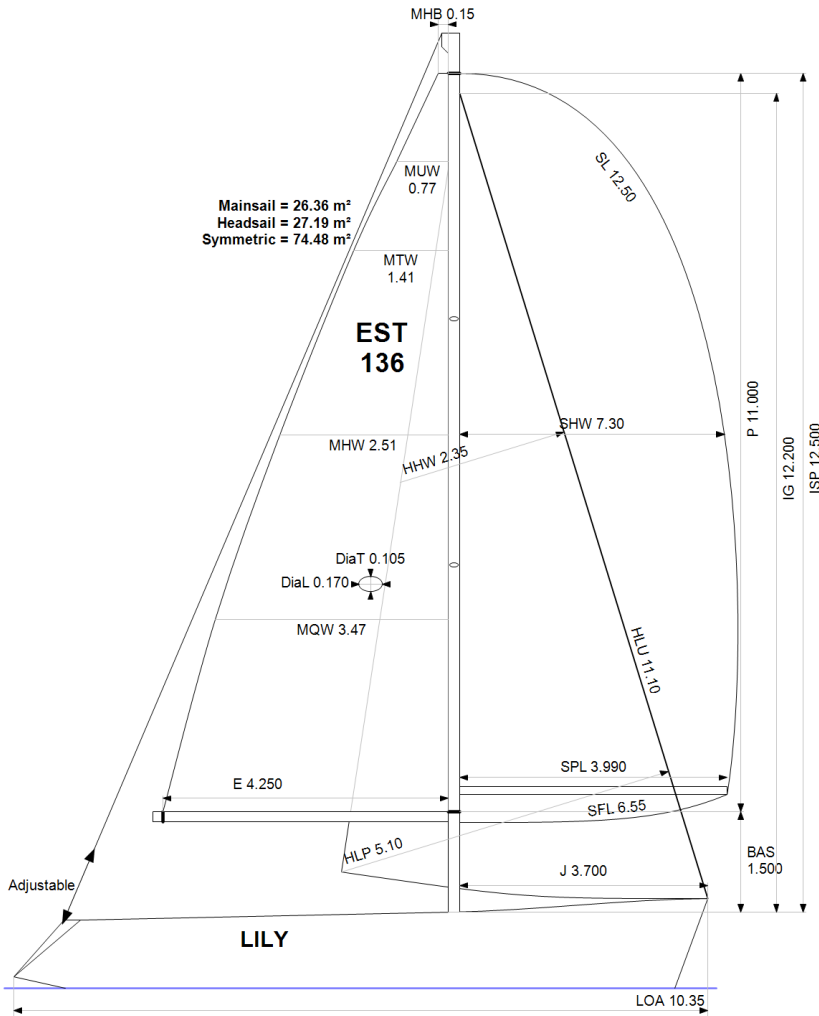
Headsails **5** \* Woven polyester sails  
Spinnakers **4**

**STABILITY**

Righting Moment **134.5 kg·m**  
Stability Index **N/A**

**OWNER**

*The owner certifies that he/she understands his/her responsibilities under ORC Rule and Regulations.*



Rated boat velocities in knots

Wind Velocity	6 kt	8 kt	10 kt	12 kt	14 kt	16 kt	20 kt
Beat Angles	45.4°	43.9°	43.5°	43.1°	41.3°	39.6°	39.0°
Beat VMG	2.86	3.49	3.96	4.37	4.74	5.01	5.15
52°	4.48	5.37	6.08	6.58	6.89	7.09	7.27
60°	4.78	5.70	6.43	6.83	7.08	7.26	7.51
75°	5.02	5.95	6.65	7.01	7.25	7.46	7.85
90°	5.03	6.14	6.87	7.26	7.53	7.71	8.01
110°	5.15	6.28	6.99	7.37	7.73	8.10	8.71
120°	5.01	6.12	6.89	7.30	7.66	8.05	8.83
135°	4.56	5.61	6.52	7.06	7.40	7.76	8.53
150°	3.85	4.88	5.79	6.58	7.05	7.38	8.05
Run VMG	3.33	4.23	5.02	5.75	6.37	6.89	7.53
Gybe Angles	146.5°	150.0°	151.0°	156.0°	172.0°	180.0°	180.0°

Time Allowances in secs/NM							
Wind Velocity	6 kt	8 kt	10 kt	12 kt	14 kt	16 kt	20 kt
Beat VMG	1256.7	1031.8	909.2	823.4	759.7	718.9	698.9
52°	804.2	670.3	591.6	547.0	522.7	507.8	495.3
60°	752.6	631.6	560.0	527.2	508.8	495.6	479.2
75°	717.1	604.6	541.7	513.3	496.7	482.9	458.3
90°	716.1	586.6	523.8	496.1	478.2	467.2	449.6
110°	699.0	573.3	515.4	488.4	465.8	444.3	413.1
120°	718.2	588.0	522.4	492.8	469.9	447.2	407.6
135°	788.6	641.9	551.9	510.2	486.2	464.2	422.0
150°	935.2	737.5	621.9	547.3	510.5	488.1	447.4
Run VMG	1079.8	851.6	717.6	626.4	565.4	522.8	477.8
Selected Courses							
Windward / Leeward	1168.2	941.7	813.4	724.9	662.5	620.8	588.4
All purpose	894.0	729.2	637.9	583.4	547.3	521.1	493.7

Single Number Scoring Options		
Course	Time On Distance	Time On Time
Windward / Leeward	756.7	0.7929
All purpose	606.5	0.9893

### Custom scoring options for Estonia

Single Number	Time On Distance	Time On Time
Coastal/Long Distance	665.0	0.9023
Triple Number Coastal/Long Distance Low	811.6	0.7393
Triple Number Coastal/Long Distance Medium	604.7	0.9922
Triple Number Coastal/Long Distance High	517.3	1.1598
Triple Number Windward/Leeward Low	1055.0	0.5687
Triple Number Windward/Leeward Medium	756.9	0.7927
Triple Number Windward/Leeward High	619.1	0.9692

Performance Curve	6 kt	8 kt	10 kt	12 kt	14 kt	16 kt	20 kt
Coastal/Long Distance	1159.4	880.6	725.3	625.7	568.2	527.9	474.0