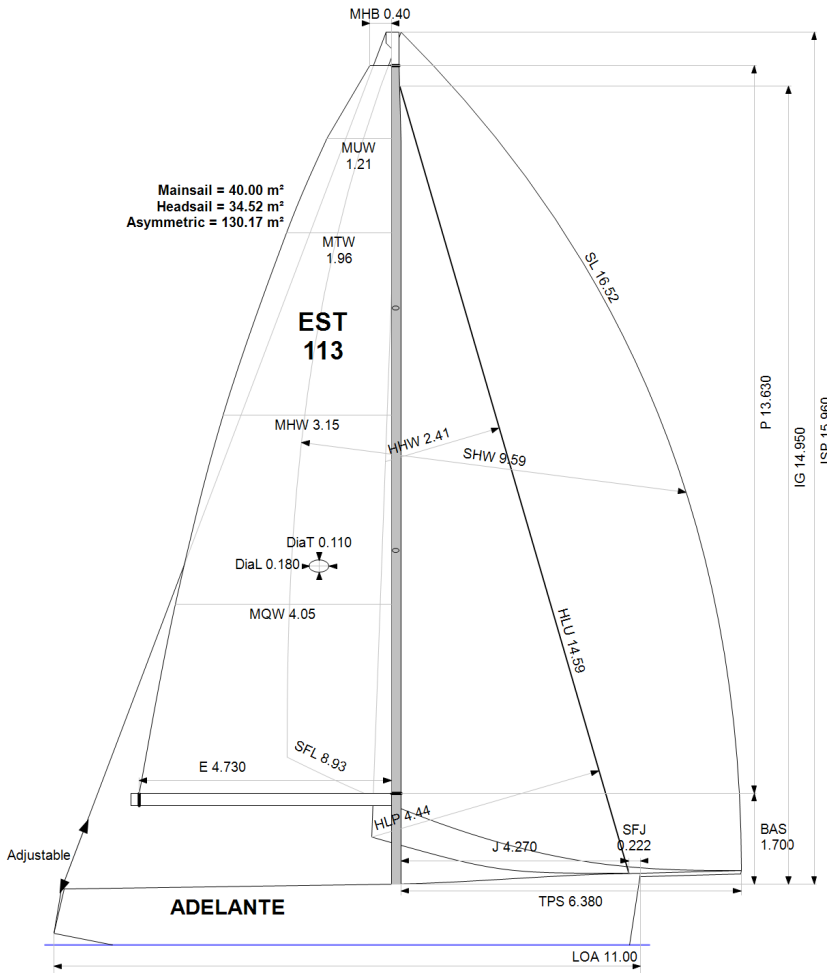


GPH = 605.6 CDL = 9.148



BOAT

Class **J-112E**
Designer **JOHNSTONE**
Builder **J-BOATS**
Age Date **05/2020**
Series Date **10/2015**
Offset File **J112-EST113.off**

HULL

Length Overall **11.000 m**
Maximum Beam **3.598 m**
Draft **2.045 m**
Displacement **5,158 kg**
DLR **5.3532**
IMS Division **Cruiser/Racer**
Dynamic Allowance **0.119%**
Age Allowance **0.195%**

PROPELLER

Installation **Strut**
Type **Folding 2 blades**
Diameter **0.425m**

CREW

Maximum weight **210 kg**
Minimum weight **125 kg** * when applied
Non Manual Power **No**
Crew Arm Extension

SAIL AREAS (m²)

	Measured	Rated
Mainsail	40.00	40.97
Headsail Luffed	34.52	34.52
Headsail Flying		

Symmetric
Asymmetric **130.17 130.17**
* All asymmetric spinnakers with SHW/SFL > 85%

SAIL LIMITATIONS

Headsails **5**
Spinnakers **4**

STABILITY

Righting Moment **128.6 kg·m**
Stability Index **121.3**

OWNER

The owner certifies that he/she understands his/her responsibilities under ORC Rule and Regulations.

Rated boat velocities in knots							
Wind Velocity	6 kt	8 kt	10 kt	12 kt	14 kt	16 kt	20 kt
Beat Angles	42.8°	41.6°	40.9°	40.5°	40.1°	39.9°	40.9°
Beat VMG	3.53	4.27	4.72	4.90	4.97	5.04	5.05
52°	5.39	6.42	6.98	7.17	7.25	7.28	7.39
60°	5.70	6.72	7.22	7.41	7.50	7.53	7.65
75°	5.96	6.95	7.42	7.68	7.84	7.93	8.00
90°	5.98	7.01	7.45	7.77	8.05	8.31	8.60
110°	6.12	7.25	7.72	7.98	8.23	8.48	8.94
120°	6.00	7.17	7.74	8.20	8.54	8.84	9.43
135°	5.37	6.68	7.47	7.96	8.50	9.09	10.31
150°	4.54	5.69	6.73	7.41	7.77	8.15	9.07
Run VMG	3.93	4.93	5.83	6.42	6.74	7.28	8.05
Gybe Angles	144.0°	147.0°	148.5°	151.0°	151.5°	176.0°	177.0°

Time Allowances in secs/NM							
Wind Velocity	6 kt	8 kt	10 kt	12 kt	14 kt	16 kt	20 kt
Beat VMG	1021.2	843.8	763.0	734.7	724.2	714.2	713.2
52°	668.5	561.1	515.9	502.2	496.7	494.4	487.1
60°	632.0	535.4	498.4	485.6	480.3	478.0	470.5
75°	604.1	518.0	485.1	469.0	459.2	453.9	450.1
90°	601.6	513.6	483.2	463.4	447.1	433.5	418.7
110°	587.9	496.6	466.2	451.4	437.2	424.7	402.7
120°	600.1	501.8	465.4	439.1	421.6	407.3	381.8
135°	670.9	538.9	482.2	452.5	423.5	396.0	349.1
150°	793.1	632.9	534.9	485.9	463.6	441.8	396.7
Run VMG	915.8	730.8	617.7	560.5	533.9	494.8	447.1
Selected Courses							
Windward / Leeward	968.5	787.3	690.3	647.6	629.1	604.5	580.1
All purpose	745.1	615.1	554.3	526.6	511.2	496.3	476.1

Single Number Scoring Options		
Course	Time On Distance	Time On Time
Windward / Leeward	674.8	0.8892
All purpose	543.3	1.1045

Custom scoring options for Estonia

Single Number	Time On Distance	Time On Time
Coastal/Long Distance	591.1	1.0150
Triple Number Coastal/Long Distance Low	680.1	0.8822
Triple Number Coastal/Long Distance Medium	539.3	1.1125
Triple Number Coastal/Long Distance High	492.4	1.2184
Triple Number Windward/Leeward Low	878.0	0.6834
Triple Number Windward/Leeward Medium	668.8	0.8971
Triple Number Windward/Leeward High	601.5	0.9975

Performance Curve	6 kt	8 kt	10 kt	12 kt	14 kt	16 kt	20 kt
Coastal/Long Distance	963.3	739.1	623.0	562.4	531.1	500.7	452.5

