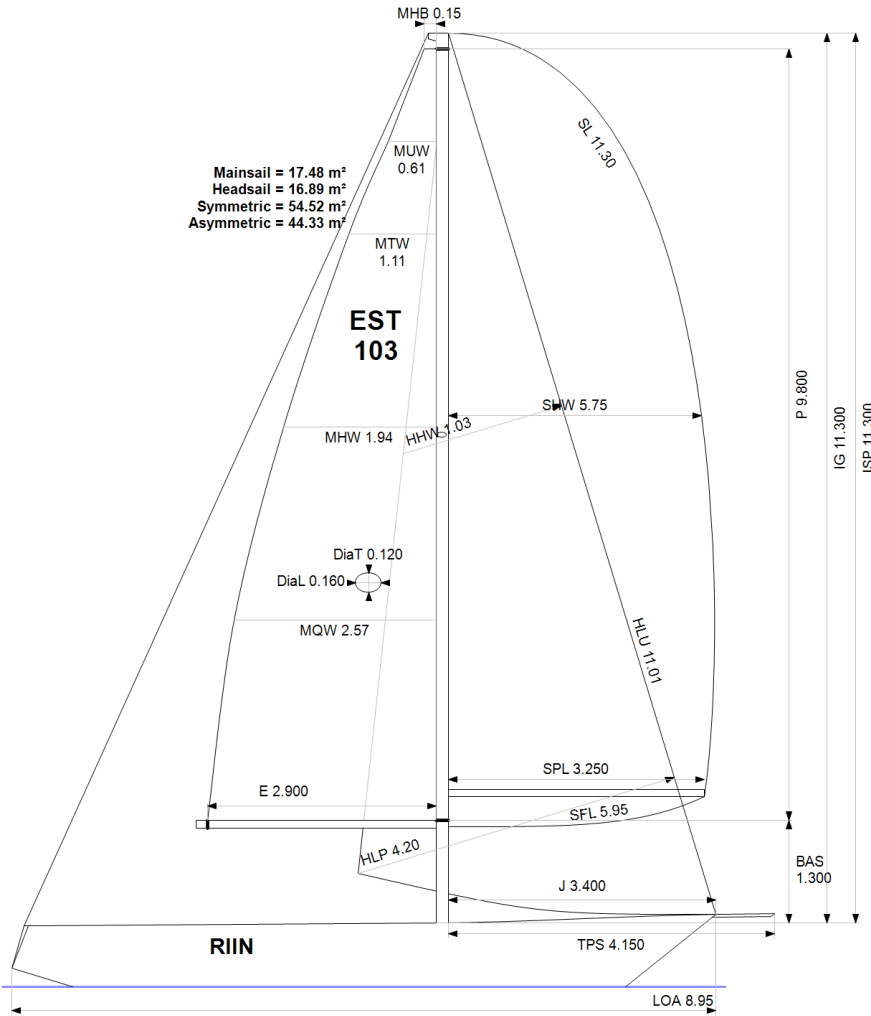


GPH = 756.2 CDL = 6.276



BOAT

Class **APHRODITE 30**
Designer
Builder
Age Date **01/1978**
Series Date **01/1976**
Offset File **EST103_CL.off**

HULL

Length Overall **8.950 m**
Maximum Beam **2.750 m**
Draft **1.602 m**
Displacement **3,675 kg**
DLR **9.9136**
IMS Division **Cruiser/Racer**
Dynamic Allowance **0.590%**
Age Allowance **0.487%**

PROPELLER

Installation **Strut**
Type **Folding 2 blades**
Diameter **0.400m**

CREW

Maximum weight **400 kg**
Minimum weight **300 kg * when applied**
Non Manual Power
Crew Arm Extension

SAIL AREAS (m²)

	Measured	Rated
Mainsail	17.48	17.77
Headsail Luffed	16.89	16.89
Headsail Flying		
Symmetric	54.52	54.52
Asymmetric	44.32	49.62

** All asymmetric spinnakers with SHW/SFL > 85%*

SAIL LIMITATIONS

Headsails **5** * Woven polyester sails
Spinnakers **4** * Asymmetric SHALL NOT be tacked on the pole

STABILITY

Righting Moment **47.5 kg·m**
Stability Index **N/A**

OWNER

The owner certifies that he/she understands his/her responsibilities under ORC Rule and Regulations.

Rated boat velocities in knots							
Wind Velocity	6 kt	8 kt	10 kt	12 kt	14 kt	16 kt	20 kt
Beat Angles	43.9°	42.0°	41.3°	41.6°	40.9°	40.1°	40.5°
Beat VMG	2.65	3.19	3.58	3.92	4.20	4.35	4.39
52°	4.07	4.82	5.41	5.83	6.08	6.22	6.32
60°	4.30	5.07	5.68	6.03	6.24	6.38	6.53
75°	4.47	5.33	5.92	6.21	6.39	6.55	6.81
90°	4.74	5.70	6.24	6.51	6.66	6.75	6.97
110°	4.80	5.80	6.30	6.61	6.89	7.17	7.47
120°	4.66	5.66	6.24	6.56	6.86	7.16	7.69
135°	4.28	5.20	5.98	6.37	6.66	6.96	7.57
150°	3.69	4.60	5.39	6.03	6.38	6.65	7.22
Run VMG	3.19	3.99	4.69	5.33	5.92	6.29	6.82
Gybe Angles	148.0°	152.0°	153.0°	160.5°	180.0°	180.0°	180.0°

Time Allowances in secs/NM							
Wind Velocity	6 kt	8 kt	10 kt	12 kt	14 kt	16 kt	20 kt
Beat VMG	1358.2	1126.8	1004.3	917.5	857.4	827.1	820.0
52°	885.2	747.0	665.7	617.4	592.0	578.4	569.9
60°	837.8	709.8	634.1	597.1	576.7	563.9	551.6
75°	805.1	675.8	608.4	580.1	563.7	549.5	528.4
90°	759.1	631.1	577.0	552.8	540.7	532.9	516.6
110°	749.5	621.0	571.2	544.8	522.2	502.3	481.7
120°	772.1	635.6	576.6	548.4	524.8	502.8	468.4
135°	841.7	691.7	602.4	565.0	540.3	516.9	475.7
150°	976.5	782.8	667.6	596.6	564.2	541.3	498.7
Run VMG	1127.6	902.8	768.0	674.8	608.5	572.1	527.6
Selected Courses							
Windward / Leeward	1242.9	1014.8	886.1	796.2	733.0	699.6	673.8
All purpose	960.0	791.8	701.8	647.5	611.1	589.8	567.2

Single Number Scoring Options		
Course	Time On Distance	Time On Time
Windward / Leeward	829.9	0.7229
All purpose	671.3	0.8938

Custom scoring options for Estonia

Single Number	Time On Distance	Time On Time
Coastal/Long Distance	733.3	0.8183
Triple Number Coastal/Long Distance Low	875.9	0.6850
Triple Number Coastal/Long Distance Medium	668.5	0.8975
Triple Number Coastal/Long Distance High	586.6	1.0228
Triple Number Windward/Leeward Low	1128.9	0.5315
Triple Number Windward/Leeward Medium	828.6	0.7241
Triple Number Windward/Leeward High	698.2	0.8593

Performance Curve	6 kt	8 kt	10 kt	12 kt	14 kt	16 kt	20 kt
Coastal/Long Distance	1231.4	949.8	793.8	693.1	635.4	597.1	543.0